



**2013-2014  
Yearbook**



# CONEBELLA SARGE'S WENDY

## EXCELLENT-93 2E



### CONEBELLA SARGE'S WENDY

PUREBRED AYRSHIRE 12/14/06 FEMALE  
 100476437 5-04 93 2E P5 +375  
 NM\$ +362  
 PTA +2.76SCC +3.0PL +1.2DPR  
 PTA +867M +30F +24P 57R  
 PTA\$ +362CY 8/13  
 PTA%  
 PFA +4554M +141F +129P  
 CLASS ST8 SR8 BD9 DF9 RA5 RW8 LS6 FA6  
 FU5 UH7 UW7 UC7 UD5 TP6 TL5 LR7  
 GOLD % FAT % PRT  
 2-01 2 305 19370 4.0 768 3.1 603  
 334 20820 4.0 833 3.1 652  
 3-02 2 305 23290 3.8 896 3.1 713  
 312 23570 3.9 908 3.1 723  
 4-02 2 305 24010 4.1 977 3.1 749  
 314 24270 4.1 988 3.1 759  
 5-02 2 305 27170 3.1 854 2.9 800  
 365 30690 3.2 980 3.0 916  
 LIFE 1399 102730 3.7 3842 3.1 3167

1ST SR 2-YEAR-OLD - 2009 INTERNATIONAL JR  
 HM ALL-AMERICAN SR 2-YEAR-OLD - 2009  
 JR ALL-AMERICAN SR 2-YEAR-OLD - 2009  
 2ND SR 3-YEAR-OLD - 2010 CENTRAL NATIONAL JR  
 RES JR ALL-AMERICAN SR 3-YEAR-OLD - 2010  
 1ST 4-YEAR-OLD - 2011 CENTRAL NATIONAL JR  
 2ND 4-YEAR-OLD - 2011 INTERNATIONAL  
 SENIOR CHAMPION - 2011 CENTRAL NATIONAL JR  
 GRAND CHAMPION - 2011 CENTRAL NATIONAL JR  
 TOTAL PERF WINNER - 2011 CENTRAL NAT'L JR  
 RES ALL-AMERICAN 4-YEAR-OLD - 2011  
 UNAN JR ALL-AMERICAN 4-YEAR-OLD - 2011  
 2ND 5-YEAR-OLD - 2012 CENTRAL NATIONAL JR  
 RES JR ALL-AMERICAN 5-YEAR-OLD - 2012

### MAPLE-DELL AVENGER SARGE-ET

100378412  
 PTA +2.59SCC +3.6PL +1.5DPR  
 PTA -338M +0F -8P 91R  
 PTA% +.07 +.01  
 PTAT +1.10T 85R 8/13  
 D/AV 17486M 3.9 684F 3.1 550P 8.5T

### CONEBELLA HELIGO'S WILLOW

100112582 5-04 82  
 GOLD % FAT % PRT  
 3-03 2 310 23360 3.9 900 3.1 722  
 4-02 2 328 23640 3.5 837 3.0 704  
 5-03 2 365 25740 3.5 900 3.1 795  
 6-06 2 363 25250 3.7 938 3.1 778  
 7-08 2 275 17770 3.8 679 3.0 538  
 LIFE 2033 134990 3.8 5105 3.1 4159

### GRANDDAM: CONEBELLA MANDATE'S WILDA

1012232 4-10 84  
 GOLD % FAT % PRT  
 2-01 2 347 16100 3.9 627 3.5 564  
 3-03 2 305 20740 3.8 795 3.4 711

BULL CALVES AVAILABLE Sired BY PRIME,  
 RIGGINS & GIBBS

DAUGHTERS:  
 TOPPLEN SOLDIER'S GOTTA WIN  
 1ST SPRING YEARLING, 2013 OH STATE FAIR  
 2 PRIME HEIFER CALVES BORN JUNE 2013

*Toppfen Farm*

**KURT & RACHEL TOPP**

**TYLER, TESSA, TANNER, BRENNAN, MARISSA & LOGAN**

05170 Lock Two Rd., New Bremen, OH 45869

(330) 262-5562 • Tanner (330) 466-7184 • Rachel (330) 317-5363

KurtAndFam@aol.com

# PALMYRA BURDETTE LH ROSY-ET



## PALMYRA BURDETTE LH ROSY-ET

PUREBRED AYRSHIRE 02/01/11 FEMALE  
70270016

P9 +458

2-04 2 PROJ 17727 4.0 709 3.1 575

1ST SR 2-YEAR-OLD, 2013 MID-ATLANTIC NAT'L  
1ST SR 2-YEAR-OLD, 2013 MD STATE FAIR

FULL SISTER TO RONDO AT TAG  
MATERNAL SISTER TO REALITY & RAMIUS  
9 MATERNAL SISTERS NOM ALL-AMERICAN

## GRANDDAM: COVEY-FARMS RENO ROSY

100011461 4-06 91									
GOLD			FAT	%	PRT				
2-04	2	305	27725	3.6	1011	3.1	863		
		365	33124	3.6	1188	3.1	1024		
4-00	2	305	34140	3.4	1171	2.7	932		
		365	39821	3.4	1357	2.8	1109		
5-09	2	305	33440	3.1	1047	2.8	953		
		365	38930	3.2	1228	2.9	1127		
7-07	2	305	16430	3.7	614	2.9	479		
		318	16710	3.7	626	2.9	488		
LIFE	2070	174790	3.5	6055	3.0	5269			

3RD JR 3-YEAR-OLD - 2000 EASTERN NAT'L  
1ST JR 3-YEAR-OLD - 2000 EASTERN NAT'L JR  
RES GRAND CHAMPION - 2000 EASTERN NAT'L JR  
2ND JR 3-YEAR-OLD - 2000 SOUTHERN NAT'L  
3RD JR 3-YEAR-OLD - 2000 SOUTHERN NAT'L JR  
RES JR ALL-AMERICAN JR 3-YEAR-OLD - 2000

## PALMYRA TRI-STAR BURDETTE-ET

100419568									
PTA	+2.78SCC	+2.0PL	+0.9DPR						
PTA	+728M	+25F	+28P	96R					
PTA%		-.01	+.02						
PTAT	+1.80T		92R	8/13					
D/AV	19241M	3.9	742F	3.2	608P	8.5T			

## GALNEY-EPC LH. ROSY-ET

100110610 3-09 90									
GOLD			FAT	%	PRT				
2-00	2	305	21110	3.7	779	2.9	621		
		365	25010	3.7	920	3.0	745		
3-03	2	305	26350	3.9	1018	3.1	817		
		365	30679	3.9	1210	3.2	969		
4-06	2	305	29510	3.7	1086	3.0	887		
		365	32980	3.8	1238	3.1	1014		
5-08	2	305	24470	3.9	961	3.1	755		
		365	29185	3.9	1125	3.1	918		
LIFE	1684	126800	3.8	4806	3.1	3970			

2ND FALL CALF - 2000 EASTERN NATIONAL JR  
2ND FALL CALF - 2000 CENTRAL NATIONAL JR  
1ST FALL YRLG IN MILK-2001 SOUTHERN NAT'L  
1ST FALL YRLG IN MILK-2001 SOUTHERN NAT'L JR  
JR ALL-AMERICAN FALL YEARLING IN MILK - 2001  
JR ALL-AMERICAN FALL YEARLING IN MILK - 2001  
2ND SR 2 - 2002 MID-ATLANTIC NAT'L  
1ST SR 2 - 2002 MID-ATLANTIC NAT'L JR  
2ND SR 2 - 2002 CENTRAL NATIONAL JR  
NOM JR ALL-AMERICAN SR 2-YEAR-OLD - 2002



18811 Wagaman Rd.  
Hagerstown, MD 21740  
Phone: (301) 739-2729  
Fax: (301) 733-9255  
palmyraayrshires@aol.com  
www.palmyrafarm.net

# PALMYRA RAMIUS T GENEVA



## PALMYRA RAMIUS T GENEVA

PUREBRED AYRSHIRE 05/06/11 FEMALE  
70270033

P9 +438

NM\$ +126  
PTA +3.17SCC -0.5PL +0.6DPR  
PTA +590M +24F +16P 44R  
PTA\$ +126CY 8/13  
PTA% +.01 -.01

2-01 2 PROJ 18057 4.0 722 2.8 530

3RD JR 2 - 2013 MID-ATLANTIC NATIONAL  
1ST JR 2 - 2013 MD STATE FAIR

MATERNAL SISTER: NOM ALL-AMERICAN  
WINTER YEARLING

## GRANDDAM: PALMYRA RAVEN S. GINGER

100330199 6-03 89

GOLD		%	FAT	%	PRT
1-11	2	365	27710	3.0	841 3.0 842
3-04	2	334	23170	3.2	749 3.0 701
4-06	2	365	35760	4.5	1626 2.9 1052
5-11	2	305	19880	4.0	805 2.9 585
7-03	2	365	33482	4.5	1456 2.9 976
LIFE		2484	166323	3.8	6358 3.0 4994

ALL-AMERICAN FALL CALF - 2004  
JR ALL-AMERICAN FALL CALF - 2004  
RES INT CHAMPION - 2005 MID-ATLANTIC NAT'L  
INT CHAMPION - 2005 MID-ATLANTIC NAT'L JR  
GRAND CHAMPION - 2005 MID-ATLANTIC NAT'L JR  
UNAN ALL-AMERICAN FALL YRLG IN MILK - 2005  
UNAN JR ALL-AMERICAN FALL YRLG IN MILK - 2005

## GALNEY-EPC GALANT RAMIUS

100216624

PTA +3.53SCC +0.1PL +0.9DPR  
PTA +203M +3F +8P 96R  
PTA% -.03 +.01  
PTAT +1.30T 91R 8/13  
D/AV 19150M 3.9 738F 3.1 603P 8.4T

## PALMYRA TRISTAR R GINGER-ET

65003772 4-10 91

GOLD		%	FAT	%	PRT
2-07	2	305	21980	4.6	1022 3.1 681
		365	25137	4.7	1181 3.1 785
4-05	2	305	21590	5.1	1093 3.2 683
		347	23340	5.0	1176 3.2 741
5-08	2	305	16890	5.4	912 3.4 568
		365	18412	5.4	975 3.3 618

## #39 8/13 HIGH CPI LIST

MATERNAL SISTER TO GIBBS AT SELECT  
SIRE

1ST SR 2 - 2009 MID-ATLANTIC NATIONAL  
INT CHAMPION - 2009 MID-ATLANTIC NATIONAL  
1ST SR 2-YR-OLD - 2009 INTERNATIONAL  
RES INT CHAMPION - 2009 INTERNATIONAL  
UNAN ALL-AMERICAN SR 2-YEAR-OLD - 2009



18811 Wagaman Rd.  
Hagerstown, MD 21740  
Phone: (301) 739-2729  
Fax: (301) 733-9255  
palmyraayrshires@aol.com  
www.palmyrafarm.net

# PALMYRA-RAGIMORE-EV B GIGI



## PALMYRA-RAGIMORE-EV B GIGI

PUREBRED AYRSHIRE 06/01/11 FEMALE  
70270039

P9 +473

2-00 2 PROJ 17877 4.8 858 3.2 612

1ST SUMMER YRLG - 2012 MID-ATLANTIC NAT'L  
RES JR CHAMPION - 2012 MID-ATLANTIC NAT'L  
2ND SUMMER YRLG - 2012 INTERNATIONAL  
RES ALL-AMERICAN SUMMER YRLG - 2012  
1ST JR 2-YEAR-OLD - 2013 MID-ATLANTIC NAT'L  
INT CHAMPION - 2013 MID-ATLANTIC NAT'L  
RES GRAND CHAMPION - 2013 MID-ATLANTIC NAT'L

OWNED IN PARTNERSHIP WITH EDMUND ELS,  
RAIGMORE TRUST, & BARTI VOLSCHENK

## GRANDDAM: PALMYRA RAVEN S. GINGER

100330199 6-03 89

GOLD		%	FAT	%	PRT
1-11	2 365	27710	3.0	841	3.0 842
3-04	2 334	23170	3.2	749	3.0 701
4-06	2 365	35760	4.5	1626	2.9 1052
5-11	2 305	19880	4.0	805	2.9 585
7-03	2 365	33482	4.5	1456	2.9 976
LIFE	2484	166323	3.8	6358	3.0 4994

ALL-AMERICAN FALL CALF - 2004  
JR ALL-AMERICAN FALL CALF - 2004  
RES INT CHAMPION - 2005 MID-ATLANTIC NAT'L  
INT CHAMPION - 2005 MID-ATLANTIC NAT'L JR  
GRAND CHAMPION - 2005 MID-ATLANTIC NAT'L JR  
UNAN ALL-AMERICAN FALL YRLG IN MILK - 2005  
UNAN JR ALL-AMERICAN FALL YRLG IN MILK - 2005

## PALMYRA TRI-STAR BURDETTE-ET

100419568

PTA	+2.78SCC	+2.0PL	+0.9DPR		
PTA	+728M	+25F	+28P	96R	
PTA%		-.01	+.02		
PTAT	+1.80T		92R	8/13	
D/AV	19241M	3.9	742F	3.2	608P 8.5T

## PALMYRA POKER GIGI-ET

65459562 4-07 90

GOLD		%	FAT	%	PRT
2-03	2 305	19810	4.3	850	3.1 605
		358	22110	4.3	951 3.1 682
3-05	2 300	20780	3.4	708	3.0 631
4-05	2 305	23690	3.6	857	3.1 737
		337	24780	3.7	911 3.1 780

#66 8/13 HIGH CPI LIST

MATERNAL SISTER TO GIBBS AT SELECT  
SIRE

2ND WINTER CALF - 2008 MID-ATLANTIC NATIONAL  
1ST SR 2-YEAR-OLD - 2010 MID-ATLANTIC NAT'L  
NOM ALL-AMERICAN SR 2-YEAR-OLD - 2010  
3RD SR 3-YEAR-OLD - 2011 SOUTHERN NATIONAL



18811 Wagaman Rd.  
Hagerstown, MD 21740  
Phone: (301) 739-2729  
Fax: (301) 733-9255  
palmyraayrshires@aol.com  
www.palmyrafarm.net

# PALMYRA REALITY GINGER-ET

## VERY GOOD-88



### PALMYRA REALITY GINGER-ET

PUREBRED AYRSHIRE 09/27/10 FEMALE  
 69261847 2-08 88 P9 +471  
 NM\$ +319  
 PTA +2.78SCC +1.2PPL -0.3DPR  
 PTA +1048M +38F +23P 57R  
 PTA\$ +319CY 8/13  
 PTA%  
 PTAT +1.50T 48R 8/13  
 PPA +3229M +141F +76P  
 CLASS ST7 SR5 BD7 DF8 RA5 RW5 LS5 FA7  
 FU8 UH7 UW5 UC7 UD8 TP7 TL4 LR7  
 1-11 2 305 18751 4.4 825 3.0 566  
 341 20642 4.4 898 3.0 624  
 #53 8/13 HIGH CPI LIST  
 2ND FALL YRLG IN MILK - 2012 INTERNATIONAL  
 RES ALL-AMERICAN FALL YRLG IN MILK - 2012  
 3RD SR 2 - 2013 MID-ATLANTIC NATIONAL

FULL SISTER TO GIBBS AT SELECT SIRES  
 DAUGHTER: PALMYRA DREAMER R GINGER  
 1ST FALL CALF - 2013 MID-ATLANTIC NAT'L  
 1ST FALL CALF - 2013 MID-ATLANTIC NAT'L JR  
 JR CHAMPION - 2013 MID-ATLANTIC NAT'L JR

### GRANDDAM: PALMYRA SATELLITE L GINGER

100164712 4-10 86  

GOLD			%	FAT	%	PRT
2-00	2	303	20350	3.8	771	3.1 636
2-11	2	303	15310	3.5	543	3.0 464
3-11	2	305	19110	3.9	743	3.1 586
		365	20860	3.9	804	3.1 648
5-01	2	299	23620	3.6	844	3.0 715
6-00	2	298	25100	3.1	789	2.9 731
LIFE		1569	105260	3.6	3752	3.0 3195

### PALMYRA TRI-STAR REALITY

100369452  
 PTA +2.92SCC -0.3DPR  
 PTA +939M +50F +21P 91R  
 PTA% +.07 -.05  
 PTAT +1.20T 84R 8/13  
 D/AV 19698M 4.1 806F 3.1 611P 8.4T

### PALMYRA RAVEN S. GINGER

100330199 6-03 89  

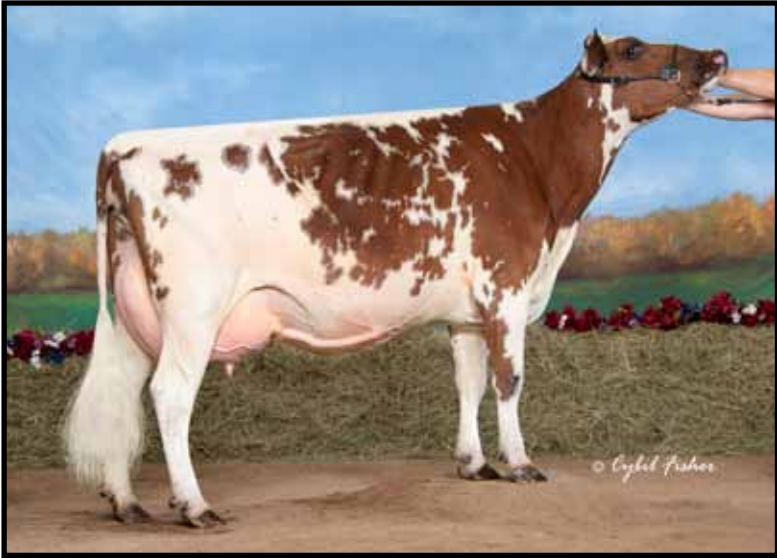
GOLD				%	FAT	%	PRT
1-11	2	305	23330	3.0	693	3.0 703	
		365	27710	3.0	841	3.0 842	
3-04	2	305	22580	3.2	727	3.0 681	
		334	23170	3.2	749	3.0 701	
4-06	2	305	32700	4.6	1515	2.9 957	
		365	35760	4.5	1626	2.9 1052	
5-11	2	305	19880	4.0	805	2.9 585	
		365	22720	4.0	899	2.9 670	
7-03	2	305	29210	4.4	1299	2.9 839	
		365	33482	4.5	1456	2.9 976	
LIFE		2484	166323	3.8	6358	3.0 4994	

ALL-AMERICAN FALL CALF - 2004  
 JR ALL-AMERICAN FALL CALF - 2004  
 RES INT CHAMPION - 2005 MID-ATLANTIC NAT'L  
 INT CHAMPION - 2005 MID-ATLANTIC NAT'L JR  
 GRAND CHAMPION - 2005 MID-ATLANTIC NAT'L JR  
 UNAN ALL-AMERICAN FALL YRLG IN MILK - 2005  
 UNAN JR ALL-AMERICAN FALL YRLG IN MILK - 2005



18811 Wagaman Rd.  
 Hagerstown, MD 21740  
 Phone: (301) 739-2729  
 Fax: (301) 733-9255  
 palmyraayrshires@aol.com  
 www.palmyrafarm.net

# GOOD-VUE POKERS ROXI EXCELLENT-90



## GOOD-VUE POKERS ROXI

PUREBRED AYRSHIRE      07/26/09 FEMALE  
840003000764066  
4-01 90      P9 +420

NM\$	+211				
PTA	+2.78SCC	+1.2PL	-0.5DPR		
PTA	+582M	+25F	+11P	50R	
PTA\$	+211CY			8/13	
PTA%		+ .01	- .04		
PTAT	+ .90T		49R	8/13	
PPA	+933M	+72F	+18P		
CLASS	ST8 SR7 BD5 DF6 RA5 RW7 LS6 FA8				
	FU7 UH8 UW7 UC8 UD9 TP8 TL6 LR8				
DHI			%	FAT	% PRT
2-00	2 305 14650 3.7	544 3.1	460		
	365 17292 3.7	639 3.2	553		

1ST SUMMER YEARLING - 2010 CENTRAL NAT'L JR  
RES JR ALL-AMERICAN SUMMER YEARLING - 2010  
3RD JR 2-YEAR-OLD - 2011 CENTRAL NATIONAL JR  
RES GRAND CHAMPION - 2013 MN STATE FAIR

DREAMER EMBRYOS AVAILABLE

## DES CHAMOIS POKER-ET

8401621C  
PTA +2.84SCC +1.6PL -0.7DPR  
PTA +218M +20F +4P 97R  
PTA% +.06 -.02  
PTAT +.60T 96R 8/13  
D/AV 19675M 3.9 774F 3.1 615P 8.4T

## GOOD-VUE LORENZOS REDRESS

100295526 4-04 88

GOLD			%	FAT	%	PRT
2-03	2	305	16050 3.8	610 2.9	470	
		307	16120 3.8	613 2.9	472	
3-03	2	304	18300 3.6	650 3.1	575	
4-03	2	305	20010 3.3	662 3.1	617	
		356	22270 3.4	752 3.1	694	
5-04	2	295	19960 3.4	684 3.2	635	

## GRANDDAM: GOOD-VUE RENOS RUBY

100154872

GOLD			%	FAT	%	PRT
4-03	2	295	20020 3.6	728 3.1	617	

*Good-Vue Ayr Farms*

MICHAEL & LINDA HANSON, DAVID, MATTHEW & STEVEN

35400 St. Hwy 1 NE, Goodridge, MN 56725

(218) 378-4588

miliha@gvtel.com



# PALMYRA TRI-STAR BETHANY-ET

## EXCELLENT-91



### PALMYRA TRI-STAR BETHANY-ET

PUREBRED AYRSHIRE		01/28/05 FEMALE	
65000847 6-06 91		P9 +444	
NM\$	+258		
PTA	+2.89SCC	+1.5PL	
PTA	+769M	+24F	+25P 63R
PTA\$	+258CY		8/13
PTA%		-.03	
PTAT	+1.10T		60R 8/13
PPA	+2767M	+75F	+79P
CLASS	ST8 SR8 BD9 DF9 RA4 RW7 LS6 FA4		
	FU8 UH9 UW9 UC8 UD5 TP7 TL8 LR8		
GOLD		%	FAT % PRT
2-01	2 305 15840 3.7	587	3.1 495
	365 18360 3.8	697	3.2 588
3-06	2 305 20060 3.5	701	3.3 662
	365 22880 3.6	814	3.3 762
4-10	2 305 20200 3.3	662	3.0 606
	335 21230 3.3	704	3.1 649
5-11	2 305 22760 3.3	758	3.0 679
	364 25050 3.4	853	3.1 768
7-01	2 231 17250 3.5	598	3.0 520
LIFE	1811 110930 3.6	3944	3.2 3527

RANEY & RIGGINS EMBRYOS AVAILABLE

### PALMYRA TRI-STAR

150440			
PTA	+2.80SCC	-0.3PL	-0.4DPR
PTA	+497M	+20F	+14P 96R
PTA%			-.01
PTAT	+ .80T		94R 8/13
D/AV	18949M 3.9	734F 3.1	592P 8.4T

### PALMYRA RENO BETHANY-ET

100101191		3-06 90	
GOLD		%	FAT % PRT
1-11	2 305 22700 3.8	867	3.1 701
	365 26925 3.9	1038	3.1 847
3-01	2 305 26910 3.6	959	3.3 875
	365 30930 3.6	1104	3.3 1006
4-08	2 305 31920 3.9	1233	3.1 982
	365 35780 3.8	1374	3.1 1123
LIFE	1551 120700 3.7	4496	3.2 3855
-----			
2ND JR 2-YEAR-OLD - 2001 SOUTHERN NATIONAL			
2ND JR 2-YEAR-OLD - 2001 SOUTHERN NAT'L JR			
HM ALL-AMERICAN JR 2-YEAR-OLD - 2001			
JR ALL-AMERICAN JR 2-YEAR-OLD - 2001			
2ND JR 3-YEAR-OLD - 2002 SOUTHERN NATIONAL			
3RD JR 3-YEAR-OLD - 2002 SOUTHERN NAT'L JR			

### GRANDDAM: PALMYRA C. BLUSH

984537		3-10 85	
DHIR		%	FAT % PRT
2-10	2 365 23880 4.2	1013	3.4 813
4-08	2 365 29240 4.3	1260	3.5 1028
5-10	2 365 31320 4.0	1257	3.4 1076
7-02	2 356 30220 4.0	1199	3.2 956
LIFE	1995 144068 4.2	6040	3.4 4934

*Good-Use Ayr Farms*

**MICHAEL & LINDA HANSON, DAVID, MATTHEW & STEVEN**

35400 St. Hwy 1 NE, Goodridge, MN 56725

(218) 378-4588

miliha@gvtel.com

# K-BAR-BEE MISS PRISS



## **K-BAR-BEE MISS PRISS**

PUREBRED AYRSHIRE  
100659416

06/02/12 FEMALE

P- +349

## **JSB-ACRES KELVIN**

100520257

## **GIBBS CONN TAHITI**

100430581 2-07 87

-----  
2ND FALL CALF - 2006 SOUTHERN NATIONAL JR  
NOM JR ALL-AMERICAN FALL CALF - 2006

## **GRANDDAM: KOZY KOUNTRY JANE-ET**

100307328 3-00 87

1ST SUMMER YEARLING, 2013 NATIONAL AYRSHIRE  
YOUTH SHOW  
JR CHAMPION, 2013 KY STATE FAIR OPEN & JR  
SHOWS  
JR CHAMPION & SUPREME CHAMPION, 2013 WESTERN  
RIVER EXPO, MURRAY, KY  
JR CHAMPION & SUPREME CHAMPION, 2013 BOWLING  
GREEN EXPO, BOWLING GREEN, KY  
JR CHAMPION, NUMEROUS DISTRICT & COUNTY  
FAIRS IN KY

---

*K-Bar-Bee Farm*

**THE BARLOWS**

780 Old Gallatin Road, Scottsville, KY 42164  
(270) 237-3448

barlow@nctc.com

# EMERALD-FARMS STAR CLOVER

## EXCELLENT-92



### EMERALD-FARMS STAR CLOVER

PUREBRED AYRSHIRE		12/18/03 FEMALE	
100339563 9-05 92		ELITE P9 +442	
NM\$	+410		
PTA	+2.73SCC	+2.8PFL	+0.4DPR
PTA	+825M	+41F	+35P 53R
PTA\$	+410CY		8/13
PTA%		+0.05	+0.05
PTAT	- .30T		37R 8/13
PPA	+3456M	+162F	+134P
CLASS	ST8 SR6 BD8 DF9 RA5 RW8 LS6 FA7		
	FU7 UH6 UW7 UC6 UD3 TP7 TL6 LR7		
GOLD		%	FAT % PRT
2-01	2 305	20800 4.5	946 3.3 680
		327 22650 4.5	1025 3.3 750
3-02	2 305	21750 4.2	924 3.3 724
		365 24790 4.2	1051 3.4 848
4-08	2 305	19200 4.3	822 3.5 674
		365 21750 4.3	926 3.6 773
5-10	2 305	19770 3.8	752 3.5 686
		365 22060 3.8	829 3.5 766
7-03	2 305	25420 4.1	1048 3.1 789
		365 29560 4.2	1229 3.2 934
8-06	2 305	24810 4.1	1008 3.2 803
		365 28650 4.2	1198 3.3 944
LIFE	2421	160030 4.2	6712 3.4 5413

BURDETTE SON AVAILABLE

DAUGHTER: EMERALD-FARMS MOON CLOVER  
1ST JR 2-YEAR-OLD - 2013 OH STATE FAIR

### PALMYRA WANDRING STAR

100211151

### LEMOLA GALLAGER CLOVER

100232790 5-01 86

GOLD		%	FAT %	PRT
2-01	2 305	12820 3.8	493 3.1	398
		365 14810 4.0	588 3.2	468
3-06	2 305	15320 4.0	617 3.3	499
		365 17690 4.1	721 3.3	585
4-09	2 305	13540 3.7	501 3.5	472
		330 14200 3.8	537 3.5	502
5-10	2 305	20820 3.4	698 3.3	692
		335 22360 3.3	745 3.3	743
6-11	2 305	16210 3.6	588 3.3	533
		365 18570 3.7	682 3.3	616
8-09	2 305	18280 3.8	688 3.2	587
		365 21590 3.8	824 3.2	696
LIFE	2421	121510 3.8	4659 3.4	4080

NOM ALL-AMERICAN SR 2-YEAR-OLD - 2004  
2ND SR 3-YEAR-OLD - 2005 SOUTHERN NAT'L JR  
HM JR ALL-AMERICAN SR 3-YEAR-OLD - 2005

### GRANDDAM: LEMOLA CARL CARLY

100068285 14-03 92

DHI		%	FAT %	PRT
8-00	2 298	19290 4.1	784 3.3	643
9-00	2 305	19580 4.1	811 3.4	667
		345 20640 4.2	866 3.4	710
LIFE	2708	124560 4.5	5655 3.4	4184

*Emerald Farms*  
THE FENTON & JODREY FAMILIES  
22050 SR 136, Winchester, OH 45697  
(937) 695-0697

Doug: (937) 205-1209  
Tom: (937) 217-0287

Ron: (937) 725-5333  
Joann: (937) 217-0697

# VALES-PRIDE REALITY ODEILIA

## VERY GOOD-85



### VALES-PRIDE REALITY ODEILIA

PUREBRED AYRSHIRE 03/04/11 FEMALE  
 100608214 2-02 85 P9 +473

NM\$ +336  
 PTA +2.87SCC +1.1PL -0.9DPR  
 PTA +1168M +60F +25P 47R  
 PTA\$ +336CY 8/13  
 PTA% +.08 -.06  
 PTAT +.90T 46R 8/13  
 PPA +3459M +199F +69P

CLASS ST7 SR5 BD6 DF7 RA6 RW5 LS5 FA7  
 FUS UH7 UW7 UC7 UD7 TP6 TL6 LR7  
 2-00 2 158 12520 4.9 610 2.6 325  
 RIP  
 PROJ 21600 1027 575

THANKS TO MAPLE-DELL FARM FOR PURCHASING HER  
 DAUGHTER IN THE 2013 GRAND NATIONAL SALE.

2ND SPRING CALF - 2011 MID-ATLANTIC NAT'L JR  
 2ND SPRING CALF - 2011 CENTRAL NAT'L JR  
 NOM ALL-AMERICAN SPRING CALF - 2011  
 NOM JR ALL-AMERICAN SPRING CALF - 2011  
 2ND SPRING YRLG - 2012 MID-ATLANTIC NAT'L JR  
 3RD SPRING YRLG - 2012 MID-ATLANTIC NAT'L JR  
 1ST SPRING YRLG - 2012 CENTRAL NAT'L JR  
 RES JR CHAMPION - 2012 CENTRAL NAT'L JR  
 NOM ALL-AMERICAN SPRING YEARLING - 2012  
 RES JR ALL-AMERICAN SPRING YEARLING - 2012  
 2ND JR 2 - 2013 MID-ATLANTIC NAT'L JR

### PALMYRA TRI-STAR REALITY

100369452  
 PTA +2.92SCC -0.3DPR  
 PTA +939M +50F +21P 91R  
 PTA% +.07 -.05  
 PTAT +1.20T 84R 8/13  
 D/AV 19698M 4.1 806F 3.1 611P 8.4T

### VALES-PRIDE EXTREME ODYSSEY

100416967 5-06 86

GOLD			%	FAT	%	PRT
2-01	2	305	19350	4.9	939	3.1 607
			365	22720	4.9	1116 3.2 721
3-03	2	305	16300	4.7	767	3.3 540
			365	18770	4.7	886 3.4 630
4-06	2	305	19980	5.3	1062	3.2 635
			330	20920	5.3	1111 3.2 668
5-06	2	288	17350	4.5	784	3.0 529
6-06	2	272	20580	4.2	867	2.7 555
LIFE			1694	103520	4.8	4924 3.1 3218

### GRANDDAM: VALES-PRIDE KELLY ONEIDA

100164468 5-06 84

GOLD			%	FAT	%	PRT
2-10	2	305	16620	4.9	819	3.2 540
			351	18530	5.0	922 3.3 606
3-11	2	305	16540	4.8	798	3.3 539
			317	16950	4.8	817 3.3 553
5-01	2	277	17040	5.6	958	3.0 514

*Vales-Pride Farm*

THE VALENTINE FAMILIES

16901 Bollinger School Rd., Emmitsburg, MD 21727

Amanda Cell (301) 447-3846

Mark Cell (240) 674-6092

ayrshireluvr@netzero.com

# SKI-PAL BBBK DAPHINEE-ET

## EXCELLENT-91



### SKI-PAL BBBK DAPHINEE-ET

PUREBRED AYRSHIRE 02/10/06 FEMALE  
65001119 4-05 91 P- +332

NM\$ -63  
PTA +3.08SCC +1.6PL +0.2DPR  
PTA -635M -28F -20P 60R  
PTA\$ -63CY 8/13  
PTA%  
PTAT +1.20T 51R 8/13  
PPA -635M -27F

CLASS	ST9	SR6	BD6	DF7	RA4	RW8	LS7	FA6
	FU8	UH8	UW8	UC7	UD8	TP8	TL5	LR7
GOLD				%	FAT	%	PRT	
3-02	2	285	11580	3.9	454	3.1	360	
4-03	2	305	16040	3.6	580	3.1	498	
		310	16160	3.6	585	3.1	502	
6-04	2	305	15420	4.0	612	3.2	489	
		333	16320	4.0	651	3.2	518	

3RD WINTER CALF - 2006 SOUTHERN NATIONAL JR  
NOM ALL-AMERICAN WINTER CALF - 2006  
RES JR ALL-AMERICAN WINTER CALF - 2006  
NOM ALL-AMERICAN WINTER YEARLING - 2007  
NOM JR ALL-AMERICAN SR 3-YEAR-OLD - 2009

### DAPHINEE'S GRANDDAUGHTER:

#### STEINBUSH REALITY DAZZLE

FALL CALF, 2013

JUNIOR CHAMPION: WI STATE AYRSHIRE SHOW, MN  
STATE FAIR, WI STATE FAIR, IA YOUTH CLASSIC,  
N.E.W. HIGH PROTEIN SHOW, COLUMBIA CO FAIR

RESERVE GRAND CHAMPION: WI STATE FAIR, IOWA  
YOUTH CLASSIC

SUPREME JUNIOR CHAMPION: IA YOUTH CLASSIC,  
NEW HIGH PROTEIN SHOW, COLUMBIA CO FAIR

### BLACKADDAR B B KELLOGG

777850C  
PTA +3.15SCC +1.1PL +0.1DPR  
PTA -723M -35F -16P 98R  
PTA% -.04 +.04  
PTAT +1.40T 97R 8/13  
D/AV 17972M 3.8 689F 3.2 574P

### MOY-AYR TRIDENT DIVINITY

100131642 3-07 92  
DHI % FAT % PRT  
3-06 2 275 15420 3.8 587 3.2 488  
4-06 2 226 11140 2.6 285 3.1 343

HM ALL-AMERICAN WINTER HEIFER CALF - 2000  
2ND WINTER YRLG HEIFER - 2001 SOUTHERN NAT'L  
NOM ALL-AMERICAN WINTER YEARLING - 2001  
2ND SR 2-YEAR-OLD - 2002 SOUTHERN NATIONAL  
NOM ALL-AMERICAN SR 2-YEAR-OLD - 2002  
1ST SR 3-YEAR-OLD - 2003 MID-ATLANTIC NAT'L  
HON MEM ALL-AMERICAN SR 3-YEAR-OLD - 2003  
3RD SR 3-YEAR-OLD - 2003 SOUTHERN NATIONAL

### GRANDDAM: MS MOY-AYR KELLY'S DIAMOND

986961 10-04 91  
GOLD % FAT % PRT  
2-00 2 286 12835 3.9 504 3.4 433  
3-00 2 305 15829 3.8 606 3.3 527  
4-03 2 305 15430 4.0 621 3.3 507  
6-06 2 288 16240 4.0 645 3.1 501  
10-00 2 254 15660 3.7 576 3.0 463  
11-03 2 203 11470 4.2 486 3.2 363  
15-03 2 305 10250 3.8 385 3.1 313  
343 10750 3.8 404 3.1 331  
LIFE 2653 131504 3.8 5035 3.1 4134

*Bushman Dairy*

TODD, CONNIE, ASHLEY & MEGAN BUSHMAN

1402 St. Hwy. 150, Calmar, IA 52132

(563) 534-7081 • Cell (563) 379-3752

# HIDDEN-ACRES BIANCA

## VERY GOOD-86



### HIDDEN-ACRES BIANCA

PUREBRED AYRSHIRE 11/05/09 FEMALE  
69595802

2-09 86 P6 +378

NM\$ +4  
PTA +3.06SCC -1.0PL +0.2DPR  
PTA +290M -7F +12P 51R  
PTA\$ +4CY 8/13  
PTA% - .10 +.02  
PTAT +.40T 41R 8/13  
PPA +762M +2F +34P

CLASS ST7 SR7 BD7 DF6 RA6 RW8 LS6 FA5  
FU8 UH9 UW5 UC9 UD8 TP6 TL4 LR7

DHI % FAT % PRT  
2-03 2 305 16450 3.9 638 3.4 558  
306 16470 3.9 639 3.4 559  
3-04 164 11750 3.5 415 3.1 360  
RIP

-----  
2ND SR 2-YEAR-OLD - 2012 INTERNATIONAL  
ALL-AMERICAN (TIE) SR 2-YEAR-OLD - 2012

### MAPLE-DELL SOLDIER-ET

144929 3-04 87 VVV+  
PTA +2.93SCC +0.3PL +0.4DPR  
PTA +128M -30F +2P 97R  
PTA% -.19 -.01  
PTAT +.10T 95R 8/13  
D/AV 18459M 3.7 675F 3.1 575P 8.4T

### STEAM-VALLEY WILTON MAGIC BRI

100475641 5-03 94 2E

DHI	%	FAT	%	PRT
2-04 2 305	15940 4.1	659 3.3	526	
	313 16280 4.1	673 3.3	537	
3-04 2 352	23530 3.6	845 3.1	726	
4-10 2 305	26430 3.6	963 3.1	813	
	336 28210 3.6	1004 3.1	878	
5-11 2 364	32470 3.3	1058 3.0	977	

-----  
3RD SUMMER YRLG - 2007 CENTRAL NATIONAL  
1ST 5-YEAR-OLD - 2011 INTERNATIONAL  
SENIOR CHAMPION - 2011 INTERNATIONAL  
GRAND CHAMPION - 2011 INTERNATIONAL  
UNAN ALL-AMERICAN 5-YEAR-OLD - 2011  
ALL-WORLD 5-YEAR-OLD - 2012  
3RD AGED COW - 2012 INTERNATIONAL  
HM ALL-AMERICAN AGED COW - 2012

### GRANDDAM: AYRDELL'S TRI MAGIC BARBIE

100381421 2-01 85

GOLD	%	FAT	%	PRT
2-00 2 265	15370 3.4	520 3.0	462	

-----  
1ST SUMMER YEARLING - 2005 SOUTHERN NAT'L  
3RD SUMMER YEARLING - 2005 SOUTHERN NAT'L JR  
NOM ALL-AMERICAN SUMMER YEARLING - 2005  
HM JR ALL-AMERICAN SUMMER YEARLING - 2005

*Hidden Acres Ayrshires*

**CORBY & CRISTINA GROEN • STEVE & SHERI GROEN**

1004 Barnhart Rd., Lynden, WA 98264  
Corby (360) 201-0921 • Steve (360) 708-2123  
corbygroen@live.com

# DESIGNER GENE'S OLIVIA

## VERY GOOD-89



### DESIGNER GENE'S OLIVIA

PUREBRED AYRSHIRE      01/20/10 FEMALE  
 65866459

	2-08	89	P-	+333				
NM\$	-105							
PTA	+3.18SCC	-1.5PL	-0.1DPR					
PTA	-270M	+3F	-5P	42R				
PTA\$	-105CY			8/13				
PTA%		+0.7	+0.2					
PTAT	-.30T		23R	8/13				
PPA	-414M	+23F	-3P					
CLASS	ST7	SR5	BD7	DF8	RA5	RW6	LS6	FA6
	FU7	UH8	UW6	UC8	UD7	TP7	TL5	LR7
GOLD				%	FAT	%	PRT	
2-05	2	305	12790	4.3	553	3.3	426	
		340	14070	4.4	615	3.4	473	

### BROW-AYR TRIDENT MOHAWK

150457

PTA	+3.26SCC	-3.7PL	-0.1DPR	
PTA	-299M	+4F	+0P	96R
PTA%		+0.9	+0.5	
PTAT	-.30T		84R	8/13
D/AV	19025M	3.9	749F	3.2 603P 8.2T

### DESIGNER GENES OPAL

100495524

2ND WINTER CALF - 2010 MID-ATLANTIC NAT'L JR  
 3RD WINTER CALF - 2010 SOUTHERN NATIONAL JR  
 1ST WINTER CALF - 2010 SOUTHERN NATIONAL  
 NOM ALL-AMERICAN WINTER CALF - 2010  
 RES JR ALL-AMERICAN WINTER CALF - 2010  
 1ST WINTER YRLG - 2011 MID-ATLANTIC NAT'L JR  
 RES JR CHAMPION - 2011 MID-ATLANTIC NAT'L JR  
 2ND WINTER YRLG - 2011 MID-ATLANTIC NATIONAL  
 2ND WINTER YRLG - 2011 CENTRAL NATIONAL JR  
 2ND SR 2 - 2012 MID-ATLANTIC NAT'L JR  
 RES INT CHAMP - 2012 MID-ATLANTIC NAT'L JR  
 RES GRAND CHAMP - 2012 MID-ATLANTIC NAT'L JR  
 1ST SR 2-YEAR-OLD - 2012 MID-ATLANTIC NAT'L  
 2ND SR 2-YEAR-OLD - 2012 SOUTHERN NAT'L JR  
 1ST SR 2-YEAR-OLD - 2012 SOUTHERN NATIONAL  
 RES INT CHAMP - 2012 SOUTHERN NATIONAL  
 NOM ALL-AMERICAN SR 2-YEAR-OLD - 2012  
 HM JR ALL-AMERICAN SR 2-YEAR-OLD - 2012  
 2ND SR 3 - 2013 MID-ATLANTIC NATIONAL JR  
 1ST SR 3-YEAR-OLD - 2013 MID-ATLANTIC NAT'L  
 RES INT CHAMP - 2013 MID-ATLANTIC NATIONAL

*Designer Genes Farm*  
**DENISE WHITING & FAMILY**  
 122 Coal Hill Lane, Slippery Rock, PA 16057  
 (724) 730-6807

# FAIRBURN SOAPY EXCELLENT-92



### FAIRBURN SOAPY

PUREBRED AYRSHIRE 12/01/08 FEMALE  
 100561171 4-05 92 P9 +520  
 NM\$ +342  
 PTA +2.98SCC -0.8PFL -0.9DPR  
 PTA +1177M +75F +44P 39R  
 PTA\$ +342CY 8/13  
 PTA%  
 PTAT +.90T +.15 +.04 47R 8/13  
 PPA +3747M +239F +146P  
 CLASS ST9 SR9 BD9 DF8 RA5 RW8 LS5 FA5  
 FU8 UH9 UW9 UC8 UD6 TP7 TL7 LR8  
 2-02 2 309 22420 4.6 1029 3.4 748  
 3-06 2 305 32545 4.4 1443 3.3 1037  
 365 37839 4.6 1732 3.3 1260  
 4-08 FIRST TEST: 131 LBS

RANKED #6 8/13 HIGH CPI LIST

JUST FRESH WITH JACKSON BULL CALF  
 WILL BE FLUSHED TO MAPLEBURN  
 REMINGTON  
 SEMEN FROM HER SON, MAULFAIR ACRES  
 DISTINCTION SNIPER, WILL BE AVAILABLE  
 SOON

### LESSARD IRON-ET

103750846C  
 PTA +3.29SCC -0.9PFL -1.6DPR  
 PTA +63M +29F +10P 80R  
 PTA% +.14 +.04  
 PTAT +.20T 61R 8/13

### FAIRBURN BBK IVORY

10318211C VG-87 CAN  
 6-02 2 330 19085 4.4 844 3.6 686  
 7-04 2 353 18071 4.4 791 3.4 608

### GRANDDAM: FAIRBURN LEGEND'S EVANGELIA

10007476C VG-85 CAN  
 4-05 2 365 15847 4.9 774 3.8 595

*Maulfair Acres*

DALE, PATTIE, DARYL, JENNIFER & DAVID MAULFAIR

400 South Center St., Jonestown, PA 17038

Dale & Patti (717) 821-6266 • David & Rachel (717) 926-5341

Daryl & Suzi (717) 507-1432 • Jennifer & Matt (717) 480-6978



# HIDDEN-VALLEY KINSMAN BOBBIE

## EXCELLENT-90



### HIDDEN-VALLEY KINSMAN BOBBIE

PUREBRED AYRSHIRE 03/08/02 FEMALE  
100250907 9-08 90 P- +329

NM\$	-8				
PTA	+2.89SCC	+1.2PFL	+1.3DPR		
PTA	-414M	-12F	-19P	46R	
PTA\$	-8CY			8/13	
PTA%		+0.2	-.03		
PTAT	+.40T		.59R	8/13	
DHI		%	FAT %	PRT	
2-02	2 305	13370 4.0	533 3.0	405	
		352 14830 4.0	598 3.1	456	
3-03	2 305	12060 3.9	470 3.2	380	
		317 12410 3.9	485 3.2	393	
4-04	2 305	13360 4.0	540 3.0	404	
		339 14200 4.1	580 3.1	434	
5-05	2 300	14370 3.9	564 3.0	427	
6-05	2 305	13020 3.7	481 3.1	401	
7-05	2 256	10660 3.4	367 3.2	341	
8-04	2 283	11490 3.8	432 3.1	358	
9-03	2 305	12270 4.0	489 3.2	397	
LIFE	2543	104920 3.9	4065 3.1	3264	

2ND SPRING YRLG - 2003 MID-ATLANTIC NATIONAL  
3RD SPRING YRLG - 2003 SOUTHERN NATIONAL  
3RD 100,000 LB COW - 2013 MID-ATLANTIC NAT'L

BURDETTE HEIFER BORN 9/2/13, HER 10TH  
NATURAL HEIFER!  
GRANDSON, HIDDEN-VALLEY GARTH'S BRAN-  
DON, AT TAURUS SERVICE

### SUNNY-ACRES JADE'S KINSMAN

143563					
PTA	+2.81SCC	+2.1PL	+2.0DPR		
PTA	-605M	-18F	-22P	79R	
PTA%		+0.3	-.02		
PTAT	+.30T		.80R	8/13	
D/AV	17500M 3.9	679F 3.1	537P 8.4T		

### DUNCRAVEN HELIGO BELLISSIMA

1002112	4-05	85			
GOLD			%	FAT %	PRT
DHI					
2-02	2 305	14840 3.9	586 3.3	497	
3-02	2 285	14280 3.9	564 3.2	464	
4-02	2 303	15230 3.7	564 3.2	480	
5-01	2 305	18350 3.6	656 3.0	545	
		364 19450 3.6	695 3.0	585	
6-03	2 305	10770 3.4	365 2.9	310	
		308 10850 3.4	368 2.9	313	
7-03	2 305	15240 3.8	583 2.9	449	
		340 15800 3.8	602 2.9	465	
8-05	2 305	8290 3.2	262 3.1	254	
		329 8620 3.2	273 3.1	264	

### GRANDDAM: LACHUTE ROAD BOBBIE'S BELLE

990645	4-09	82	+++V+		
DHI			%	FAT %	PRT
6-02	2 219	10540 3.6	380 3.1	327	

*Hidden Valley Ayrshires*

ROYSTON G. COALE III

406 Bobcat Rd., Newville, PA 17241

(717) 309-7022

littleredcows@aol.com

# BRICKER FARMS BURDETTE CHASNEY

## EXCELLENT-90



### BRICKER FARMS BURDETTE CHASNEY

PUREBRED AYRSHIRE 03/03/09 FEMALE  
 100564325 4-00 90 P9 +444  
 NM\$ +251  
 PTA +2.92SCC +1.5PL +0.4DPR  
 PTA +515M +30F +16P 52R  
 PTA\$ +251CY 8/13  
 PTA% +.05  
 PTAT +1.50T 54R 8/13  
 PPA +665M +73F +22P  
 CLASS ST5 SR7 BD7 DF8 RA5 RW7 LS6 FA6  
 FU8 UH7 UW8 UC7 UD6 TP7 TL5 LR7  
 DHI % FAT % PRT  
 1-11 2 305 17430 4.1 723 3.1 534  
 3-02 2 286 18400 3.9 714 3.1 564  
 4-02 74 5051 2.7 138 2.8 141  
 RIP  
 ME 17073 488 507

-----  
 3RD 4-YEAR-OLD & 1ST BU, 2013 MID-ATLANTIC  
 NAT'L  
 GRAND & RES SUPREME, 2012 CANFIELD OH FAIR  
 GRAND & HM SUPREME, 2013 CANFIELD OH FAIR

CHASNEY'S TWO FULL BROTHERS ARE FOR  
 SALE

### PALMYRA TRI-STAR BURDETTE-ET

100419568  
 PTA +2.78SCC +2.0PL +0.9DPR  
 PTA +728M +25F +28P 96R  
 PTA% -.01 +.02  
 PTAT +1.80T 92R 8/13  
 D/AV 19241M 3.9 742F 3.2 608P 8.5T

### BRICKER-FARMS RAVEN CHELSEA

100343229 8-00 92 3E  
 DHI % FAT % PRT  
 2-09 2 305 19320 4.0 773 3.3 633  
 4-03 2 302 19600 4.2 818 3.5 680  
 5-03 2 305 23190 4.4 1021 3.3 757

### GRANDDAM: LEMOLA CARL CARLY

100068285 14-03 92 6E  
 DHI % FAT % PRT  
 2-11 2 305 12570 4.8 600 3.3 415  
 329 13330 4.8 639 3.3 443  
 3-11 2 305 9610 4.8 460 3.7 353  
 335 9780 4.8 466 3.7 360  
 5-00 2 355 11790 4.5 527 3.5 410  
 8-00 2 298 19290 4.1 784 3.3 643  
 9-00 2 305 19580 4.1 811 3.4 667  
 345 20640 4.2 866 3.4 710  
 10-06 2 305 16150 4.9 792 3.2 520  
 11-09 2 305 14830 5.2 766 3.4 502  
 LIFE 2708 124560 4.5 5655 3.4 4184

*Bricker Farms*

**TODD BRICKER**

16122 W. South Range Rd., Beloit, OH 44609  
 (330) 692-2877

# CONEBELLA BURDETTE'S SEREN

## EXCELLENT-91 2E



### CONEBELLA BURDETTE'S SEREN

PUREBRED AYRSHIRE 04/11/07 FEMALE  
 100486069 6-01 91 2E P9 +448  
 NM\$ +317  
 PTA +2.84SCC +2.8PFL +0.1DPR  
 PTA +664M +26F +22P 60R  
 PTA\$ +317CY 8/13  
 PTA% +.01  
 PTAT +1.20T 64R 8/13  
 PPA +1447M +66F +49P

CLASS	ST7	SR8	BD8	DF7	RA5	RW8	LS6	FA7
	FU8	UH7	UW7	UC8	UD7	TP6	TL5	LR7
GOLD				%	FAT	%	PRT	
2-00	2	305	19690	3.7	723	3.3	643	
			365	23770	3.8	904	3.3	790
3-03	2	305	20190	4.2	843	3.2	656	
			365	22950	4.0	915	3.3	747
4-11	2	305	19280	3.7	718	3.1	598	
			329	20040	3.7	751	3.1	626

-----  
 #123 8/13 HIGH CPI LIST  
 SON, CONEBELLA PERCY'S SIREN, AT  
 GENEX

### PALMYRA TRI-STAR BURDETTE-ET

100419568  
 PTA +2.78SCC +2.0PFL +0.9DPR  
 PTA +728M +25F +28P 96R  
 PTA% -.01 +.02  
 PTAT +1.80T 92R 8/13  
 D/AV 19241M 3.9 742F 3.2 608P 8.5T

### CONEBELLA PARDNER'S SERENA

100340824 4-02 88

GOLD				%	FAT	%	PRT
2-03	2	305	22010	4.3	943	3.1	691
			365	24760	4.4	1079	3.2
3-07	2	305	27350	3.5	962	3.1	837
			315	27740	3.5	976	3.1
4-07	2	287	25800	3.4	882	3.2	824
5-05	2	305	26080	3.3	851	3.0	772
			337	26910	3.3	883	3.0
6-06	2	305	26360	3.5	924	3.0	799
			365	27880	3.5	984	3.1
LIFE			1795	137670	3.6	5023	3.1

### GRANDDAM: CONEBELLA KELLY'S SONIA

100112694 5-04 86

GOLD				%	FAT	%	PRT
1-11	2	305	19700	3.9	765	3.2	636
			332	21360	3.8	822	3.2
3-00	2	269	18760	3.6	672	3.3	618
			301	19520	3.6	699	3.3
4-00	2	287	19130	3.8	724	3.1	589
5-01	2	255	21430	3.4	722	3.0	635



*Conebella Farms*  
**DON & PAM GABLE, JOSHUA, TYLER & KEVIN**  
 337 Chestnut Tree Rd., Elverson, PA 19520  
 (610) 286-2967 • Cell (484) 824-2164  
 gable@conebellafarm.com • www.conebellafarm.com  
 Farm Fresh Cheese & Spreads

# KLER-VU RAMIUS CHRISTMAS

## EXCELLENT-92



### KLER-VU RAMIUS CHRISTMAS

PUREBRED AYRSHIRE 12/24/09 FEMALE  
 69247784 3-06 92 P9 +434  
 NM\$ +167  
 PTA +3.24SCC +0.9PL +0.2DPR  
 PTA +824M +22F +23P 50R  
 PTA\$ +167CY 8/13  
 PTA%  
 PTAT +.80T -.05 -.02 44R 8/13  
 PPA +1818M +19F +51P  
 CLASS ST8 SR7 BD7 DF8 RA7 RW7 LS3 FA7  
 FU8 UH8 UW8 UC8 UD6 TP7 TL4 LR7  
 GOLD % FAT % PRT  
 2-02 3 305 25050 3.6 913 3.1 784  
 340 26650 3.7 983 3.1 838

-----  
 2ND WINTER CALF - 2010 EASTERN STATES NAT'L  
 1ST WINTER YEARLING - 2011 INTERNATIONAL  
 ALL-AMERICAN WINTER YEARLING - 2011  
 1ST SR 2-YEAR-OLD - 2012 INTERNATIONAL  
 ALL-AMERICAN (TIE) SR 2-YEAR-OLD - 2012

### GALNEY-EPC GALANT RAMIUS

100216624  
 PTA +3.53SCC +0.1PL +0.9DPR  
 PTA +203M +3F +8P 96R  
 PTA% -.03 +.01  
 PTAT +1.30T 91R 8/13  
 D/AV 19150M 3.9 738F 3.1 603P 8.4T

### PINEVILLE-FARM PARDNER LEXUS

100519361 5-06 92  
 GOLD % FAT % PRT  
 2-07 3 305 26180 4.2 1109 3.1 818  
 4-02 3 305 22030 4.5 993 3.1 680  
 312 22420 4.5 1010 3.1 695  
 5-02 3 305 36430 3.9 1414 2.9 1043  
 365 44520 4.1 1840 2.9 1280  
 6-02 3 305 36280 4.6 1686 3.0 1101  
 LIFE 1573 142650 4.4 6207 3.1 4378

-----  
 #100 8/13 HIGH CPI LIST

### GRANDDAM: PINEVILLE-FARM HEXEL

100241312 5-03 83  
 GOLD % FAT % PRT  
 2-02 2 276 18100 4.2 754 3.1 562  
 3-01 2 305 22620 4.2 955 3.1 700  
 316 23260 4.2 984 3.1 721  
 4-02 2 305 22900 4.1 950 3.1 719  
 350 24990 4.2 1044 3.2 789  
 5-03 2 305 18600 4.1 771 3.1 569  
 306 18630 4.1 773 3.1 570  
 6-03 2 305 17940 3.9 701 3.0 544  
 7-06 2 305 14200 4.0 571 3.2 455  
 326 14590 4.0 589 3.2 469  
 LIFE 1992 120580 4.1 4981 3.1 3766

*Kler-Vu Dairy*

**TOM GILLETTE**

5137 Old Route 12, Lyonsfalls, NY 13368

(315) 982-7707

j.gillette@southlewis.org

# VALES-PRIDE RAWHIDE BOSTON

## EXCELLENT-92



### VALES-PRIDE RAWHIDE BOSTON

PUREBRED AYRSHIRE 12/10/08 FEMALE  
 100551839 3-10 92 P8 +407  
 NM\$ +80  
 PTA +3.02SCC -0.8BPL -1.1DPR  
 PTA -17M +31F +6P 50R  
 PTA\$ +80CY 8/13  
 PTA%  
 PTAT +.90T 55R 8/13  
 PPA -239M +72F +15P  
 CLASS ST8 SR8 BD8 DF7 RA5 RW8 LS5 FA8  
 FU7 UH9 UW8 UC7 UD6 TP7 TL7 LR9  
 GOLD % FAT % PRT  
 2-03 2 305 17840 4.3 768 3.2 575  
 365 20900 4.3 898 3.3 683  
 3-07 2 305 19860 4.1 814 3.1 625

2ND WINTER YRLG - 2010 MID-ATLANTIC NAT'L JR  
 1ST WINTER YRLG - 2010 MID-ATLANTIC NAT'L  
 HM ALL-AMERICAN WINTER YRLG - 2010  
 RES JR ALL-AMERICAN WINTER YRLG - 2010  
 2ND SR 2-YEAR-OLD - 2011 MID-ATLANTIC NAT'L  
 NOM ALL-AMERICAN SR 2-YEAR-OLD - 2011  
 1ST SR 3-YEAR-OLD - 2012 MID-ATLANTIC NAT'L  
 INT CHAMPION - 2012 MID-ATLANTIC NAT'L  
 2ND SR 3-YEAR-OLD - 2012 INTERNAT'L

### CKO RAWHIDE-ET

100472376  
 PTA +3.20SCC -2.3BPL -1.8DPR  
 PTA -46M +48F +8P 87R  
 PTA% +.27 +.05  
 PTAT +.10T 81R 8/13  
 D/AV 18278M 4.2 762F 3.2 583P 8.4T

### VALES-PRIDE EQUIP BOSLEY

100276587 4-00 85  
 GOLD % FAT % PRT  
 2-03 2 305 17900 4.9 869 2.9 519  
 324 18790 4.8 910 2.9 550  
 3-04 2 305 25140 4.7 1189 3.0 743  
 365 28800 4.8 1369 3.0 867  
 4-09 2 305 24000 4.6 1103 3.2 758  
 365 26430 4.5 1196 3.2 844  
 6-02 2 305 22470 4.8 1086 3.0 664  
 310 22710 4.8 1094 3.0 672  
 LIFE 1435 100030 4.7 4721 3.1 3054

*Maple-Dell Farm*  
**DAVID PATRICK & FAMILY**  
 1960 Daisy Rd., Woodbine, MD 21797  
 (410) 489-4160

# MAPLE-DELL ZORRO DAFOURTH

## EXCELLENT-95 2E



### MAPLE-DELL ZORRO DAFOURTH

PUREBRED AYRSHIRE 07/04/02 FEMALE  
 100257070 6-06 95 2E P9 +446  
 NM\$ +296  
 PTA +2.74SCC +1.7P/L +0.2DPR  
 PTA +202M +29F +15P 68R  
 PTA\$ +296CY 8/13  
 PTA%  
 PTAT +1.20T 65R 8/13  
 PPA +2791M +168F +85P

CLASS	ST9	SR9	BD8	DF7	RA6	RW9	LS5	FA8
	FU7	UH7	UW7	UC8	UD7	TP8	TL6	LR8
GOLD				%	FAT	%	PRT	
2-00	2	305	22380	4.3	958	3.3	737	
3-00	2	305	21790	4.0	866	3.1	676	
		310	22000	4.0	871	3.1	682	
4-00	2	305	23150	4.7	1080	3.3	762	
		365	26200	4.6	1203	3.3	864	
6-01	2	305	26150	4.6	1197	3.0	784	
		365	30950	4.5	1387	3.0	939	
7-11	2	305	23770	4.4	1044	3.0	707	
		365	27930	4.3	1193	3.0	838	
9-06	2	305	23220	4.7	1098	2.9	668	
LIFE		2287	165180	4.4	7191	3.1	5148	

NOM ALL-AMERICAN JR 2-YEAR-OLD - 2004  
 INT CHAMPION - 2005 MID-ATLANTIC NAT'L  
 RES ALL-AMERICAN JR 3-YEAR-OLD - 2005  
 GRAND CHAMPION - 2006 MID-ATLANTIC NATIONAL  
 RES GRAND CHAMPION - 2006 CENTRAL NATIONAL  
 RES ALL-AMERICAN 4-YEAR-OLD - 2006

TWO SONS IN AI:  
 MAPLE-DELL MODEM DIEGO  
 MAPLE-DELL MODEM DREW

### KILDARE ZORRO ET (FC)

100159390  
 PTA +2.83SCC +0.8P/L +0.1DPR  
 PTA -15M -9F -4P 86R  
 PTA% -0.05 -0.02  
 PTAT +.50T 79R 8/13  
 D/AV 18538M 3.7 677F 3.1 578P 8.3T

### MAPLE-DELL T S DARE

100154827 3-03 90

GOLD			%	FAT	%	PRT
1-11	2	249	14420	4.3	617	3.1 454
2-10	2	305	22280	4.8	1079	3.3 726
		355	24070	4.8	1157	3.3 792
4-01	2	305	25160	4.9	1240	3.1 792
		365	27290	4.9	1330	3.2 865

### GRANDDAM: SUNNY-ACRES PROLY DARLENE

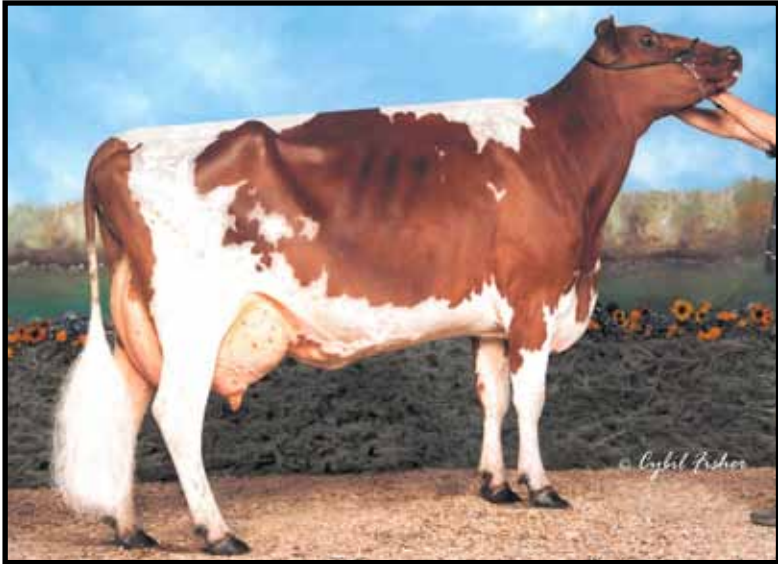
1001476 3-04 87

GOLD			%	FAT	%	PRT
1-11	2	305	13960	4.4	620	3.3 456
3-00	2	286	14850	4.7	691	3.4 502
4-00	2	305	19890	4.3	854	3.2 639
		320	20510	4.3	881	3.2 661
4-11	2	305	15770	4.1	642	3.4 529
		324	16420	4.1	672	3.4 553
5-11	2	305	18960	3.9	747	3.2 604
		333	19810	4.0	783	3.2 633
6-11	2	302	16240	4.2	681	3.3 538
LIFE		2022	111250	4.2	4709	3.2 3614

*Maple-Dell Farm*  
**DAVID PATRICK & FAMILY**  
 1960 Daisy Rd., Woodbine, MD 21797  
 (410) 489-4160

# MAPLE-DELL TRIDENT DEE-ET

## EXCELLENT-91



### MAPLE-DELL TRIDENT DEE-ET

PUREBRED AYRSHIRE 09/22/07 FEMALE  
 100510791 3-07 91 P9 +468  
 NM\$ +290  
 PTA +2.81SCC +1.2PFL -0.6DPR  
 PTA +351M +38F +23P 59R  
 PTA\$ +290CY 8/13  
 PTA%  
 PTAT +1.40T +.13 +.06 56R 8/13  
 PPA +788M +114F +62P  
 CLASS ST8 SR6 BD6 DF8 RA6 RW6 LS5 FA6  
 FU6 UH9 UW9 UC7 UD6 TP6 TL7 LR7  
 GOLD % FAT % PRT  
 2-04 2 305 18060 4.7 850 3.5 637  
 358 21010 4.7 984 3.6 749  
 3-05 2 305 24220 4.5 1084 3.3 802  
 365 26890 4.5 1208 3.4 906

-----  
 DAM OF 1ST PLACE PRODUCE OF DAM, 2013  
 MD STATE FAIR  
 SON, MAPLE-DELL BURDETTE DEMPSEY-ET,  
 AT ACCELERATED GENETICS

NOM ALL-AMERICAN FALL CALF - 2008  
 NOM JR ALL-AMERICAN FALL CALF - 2008  
 NOM ALL-AMERICAN FALL YEARLING - 2009  
 HM JR ALL-AMERICAN FALL YEARLING - 2009  
 NOM ALL-AMERICAN SR 2-YEAR-OLD - 2010  
 HM JR ALL-AMERICAN SR 2-YEAR-OLD - 2010  
 RES INT CHAMP - 2011 MID-ATLANTIC NAT'L JR  
 NOM ALL-AMERICAN SR 3-YEAR-OLD - 2011  
 NOM JR ALL-AMERICAN SR 3-YEAR-OLD - 2011  
 SR CHAMPION - 2012 MID-ATLANTIC NATIONAL JR

### ARDROSSAN EV KATES TRIDENT \*FT

144136 12-03 95 EEEE  
 PTA +3.12SCC -1.6PL -1.4DPR  
 PTA +22M +14F +8P 99R  
 PTA% +.07 +.04  
 PTAT +.70T 98R 8/13  
 D/AV 18228M 3.9 710F 3.2 577P 8.3T

### MAPLE-DELL ZORRO DAFOURTH

100257070 6-06 95 2E  
 GOLD % FAT % PRT  
 2-00 2 305 22380 4.3 958 3.3 737  
 3-00 2 305 21790 4.0 866 3.1 676  
 310 22000 4.0 871 3.1 682  
 4-00 2 305 23150 4.7 1080 3.3 762  
 365 26200 4.6 1203 3.3 864  
 6-01 2 305 26150 4.6 1197 3.0 784  
 365 30950 4.5 1387 3.0 939  
 7-11 2 305 23770 4.4 1044 3.0 707  
 365 27930 4.3 1193 3.0 838  
 9-06 2 305 23220 4.7 1098 2.9 668  
 LIFE 2287 165180 4.4 7191 3.1 5148

-----  
 NOM ALL-AMERICAN JR 2-YEAR-OLD - 2004  
 INT CHAMPION - 2005 MID-ATLANTIC NAT'L  
 RES ALL-AMERICAN JR 3-YEAR-OLD - 2005  
 GRAND CHAMPION - 2006 MID-ATLANTIC NATIONAL  
 RES GRAND CHAMPION - 2006 CENTRAL NATIONAL  
 RES ALL-AMERICAN 4-YEAR-OLD - 2006

### GRANDDAM: MAPLE-DELL T-S DARE

100154827 3-03 90  
 GOLD % FAT % PRT  
 1-11 2 249 14420 4.3 617 3.1 454  
 2-10 2 355 24070 4.8 1157 3.3 792  
 4-01 2 365 27290 4.9 1330 3.2 865

*Maple-Dell Farm*  
**DAVID PATRICK & FAMILY**  
 1960 Daisy Rd., Woodbine, MD 21797  
 (410) 489-4160

# MAPLE-DELL OBLIQUE DARLENE-ET



## MAPLE-DELL OBLIQUE DARLENE-ET

95.97% AYRSHIRE 01/27/11 FEMALE  
65302703 95.97%  
P9 +480

NM\$ +531  
PTA +2.76SCC +3.9PL +2.0DPR 95.97%  
PTA +796M +55F +30P 47R  
PTA\$ +531CY 8/13  
PTA% +.13 +.03  
PPA +1363M +101F +56P  
2-00 2 223 12922 4.3 550 3.1 440  
ME 20533 870 RIP 632

2ND WINTER YRLG - 2012 MID-ATLANTIC NAT'L JR  
1ST WINTER YRLG - 2012 MID-ATLANTIC NAT'L  
1ST SR 2 - 2013 MID-ATLANTIC NAT'L JR  
2ND SR 2 - 2013 MID-ATLANTIC NAT'L

## GRANDDAM: MAPLE-DELL ZORRO DAFOURTH

100257070 6-06 95 2E  
GOLD % FAT % PRT  
2-00 2 305 22380 4.3 958 3.3 737  
3-00 2 310 22000 4.0 871 3.1 682  
4-00 2 365 26200 4.6 1203 3.3 864  
6-01 2 365 30950 4.5 1387 3.0 939  
7-11 2 365 27930 4.3 1193 3.0 838  
9-06 2 305 23220 4.7 1098 2.9 668  
LIFE 2287 165180 4.4 7191 3.1 5148

NOM ALL-AMERICAN JR 2-YEAR-OLD - 2004  
INT CHAMPION - 2005 MID-ATLANTIC NAT'L  
RES ALL-AMERICAN JR 3-YEAR-OLD - 2005  
GRAND CHAMPION - 2006 MID-ATLANTIC NATIONAL  
RES GRAND CHAMPION - 2006 CENTRAL NATIONAL  
RES ALL-AMERICAN 4-YEAR-OLD - 2006

## JELYCA OBLIQUE

7407843C 91.95%  
PTA +2.83SCC +4.2PL +1.3DPR  
PTA +965M +56F +30P 88R  
PTA% +.11  
PTAT +.90T 74R 8/13  
D/AV 21502M 4.0 866F 3.2 680P 8.5T

## MAPLE-DELL TRIDENT DEE-ET

100510791 3-07 91  
GOLD % FAT % PRT  
2-04 2 305 18060 4.7 850 3.5 637  
358 21010 4.7 984 3.6 749  
3-05 2 305 24220 4.5 1084 3.3 802  
365 26890 4.5 1208 3.4 906

NOM ALL-AMERICAN FALL CALF - 2008  
NOM JR ALL-AMERICAN FALL CALF - 2008  
NOM ALL-AMERICAN FALL YEARLING - 2009  
HM JR ALL-AMERICAN FALL YEARLING - 2009  
NOM ALL-AMERICAN SR 2-YEAR-OLD - 2010  
HM JR ALL-AMERICAN SR 2-YEAR-OLD - 2010  
RES INT CHAMP - 2011 MID-ATLANTIC NAT'L JR  
NOM ALL-AMERICAN SR 3-YEAR-OLD - 2011  
NOM JR ALL-AMERICAN SR 3-YEAR-OLD - 2011  
SR CHAMPION - 2012 MID-ATLANTIC NATIONAL JR

Maple-Dell Farm  
DAVID PATRICK & FAMILY  
1960 Daisy Rd., Woodbine, MD 21797  
(410) 489-4160



# SHARWARDS CALIMERO KERRY EXCELLENT-91



## SHARWARDS CALIMERO KERRY

95.37% AYRSHIRE 03/28/07 FEMALE  
100515880 95.37%  
5-09 91 P9 +478

NM\$ +340  
PTA +2.84SCC +0.5PL +1.0DPR  
PTA +697M +50F +27P 53R  
PTA\$ +340CY 8/13  
PTA% +.12 +.03  
PTAT +.90T 52R 8/13  
PPA +2219M +169F +89P

CLASS ST7 SR5 BD6 DF8 RA5 RW5 LS6 FA7  
FU7 UH9 UW8 UC6 UD5 TP5 TL5 LR8

GOLD			%	FAT	%	PRT
2-05	2	283	16920	4.6	786	3.2 549
3-03	2	272	17180	4.7	804	3.5 600
4-04	2	337	20819	3.9	815	3.3 684
5-06	2	323	32395	4.5	1447	3.2 1024

EMBRYOS AVAILABLE

## MARGOT CALIMERO

10310847C 90.75%  
PTA +3.02SCC +0.2PL +1.0DPR  
PTA +21M +13F +7P 95R  
PTA% +.06 +.03  
PTAT +1.10T 93R 8/13  
D/AV 19255M 3.9 750F 3.2 612P 8.5T

## SHARWARDS CANNON KERRY

100421688

## GRANDDAM: SHARWARDS BBBK KEEPER

100123423 3-11 88

GOLD			%	FAT	%	PRT
2-02	2	305	19170	4.2	805	3.1 602
			307	19280	4.2	812 3.1 606
3-01	2	305	20090	3.7	752	3.1 626
			346	21920	3.8	829 3.2 691
4-02	2	305	22810	3.4	784	3.1 710
			365	25950	3.5	909 3.2 818

## FOURTH DAM: VG-86

3-02 2 305 21560 4.0 854 3.1 679

## FIFTH DAM: VG-89

*Kerry Partners*

DAVE KOSS  
(563) 543-0440

DANE LANG  
(641) 990-5096

BLAKE BIEBER  
(319) 480-6263

23820 Pleasant Grove Rd. E, Epworth, IA 52045  
skipalayrshires@aol.com

# PALMYRA RIGGINS T GRETCHEN-ET



## PALMYRA RIGGINS T GRETCHEN-ET

PUREBRED AYRSHIRE 02/20/11 FEMALE  
70270022 P9 +444

NOM ALL-AMERICAN WINTER YEARLING - 2012

EMBRYOS AVAILABLE

## GRANDDAM: PALMYRA RAVEN S. GINGER

100330199 6-03 89		%		FAT	%	PRT
<b>GOLD</b>						
1-11	2	305	23330	3.0	693	3.0 703
			27710	3.0	841	3.0 842
3-04	2	305	22580	3.2	727	3.0 681
			334	23170	3.2	749 3.0 701
4-06	2	305	32700	4.6	1515	2.9 957
			365	35760	4.5	1626 2.9 1052
5-11	2	305	19880	4.0	805	2.9 585
			365	22720	4.0	899 2.9 670
7-03	2	305	29210	4.4	1299	2.9 839
			365	33482	4.5	1456 2.9 976
<b>LIFE</b>			2484	166323	3.8	6358 3.0 4994

ALL-AMERICAN FALL CALF - 2004  
JR ALL-AMERICAN FALL CALF - 2004  
RES INT CHAMPION - 2005 MID-ATLANTIC NAT'L  
INT CHAMPION - 2005 MID-ATLANTIC NAT'L JR  
GRAND CHAMPION - 2005 MID-ATLANTIC NAT'L JR  
UNAN ALL-AMERICAN FALL YRLG IN MILK - 2005  
UNAN JR ALL-AMERICAN FALL YRLG IN MILK - 2005

## PALMYRA POKER RIGGINS-ET

65459499  
PTA +3.41SCC -0.8PL -0.4DPR  
PTA +90M +27F +7P 84R  
PTA% +1.13 +.03  
PTAT +1.20T 61R 8/13  
D/AV 20187M 3.9 795F 3.1 626P 8.4T

## PALMYRA TRISTAR R GINGER-ET

65003772 4-10 91		%		FAT	%	PRT
<b>GOLD</b>						
2-07	2	305	21980	4.6	1022	3.1 681
			365	25137	4.7	1181 3.1 785
4-05	2	305	21590	5.1	1093	3.2 683
			347	23340	5.0	1176 3.2 741
5-08	2	305	16890	5.4	912	3.4 568
			365	18412	5.4	975 3.3 618

1ST SR 2-YEAR-OLD - 2009 MID-ATLANTIC NAT'L  
INT CHAMPION - 2009 MID-ATLANTIC NATIONAL  
1ST SR 2-YR-OLD - 2009 INTERNATIONAL  
RES INT CHAMPION - 2009 INTERNATIONAL  
UNAN ALL-AMERICAN SR 2-YEAR-OLD - 2009

*Gretchen Partners*  
**BIEBER, KOSS, FAIRBANKS & PAYNE**  
733 Hodgen Rd., Springville, IA 52336  
(319) 480-6263 Bieber

# DES CHAMOIS PALEO-ET

## EXCELLENT-93 2E



### DES CHAMOIS PALEO-ET

PUREBRED AYRSHIRE 09/16/05 FEMALE  
 100563182 6-01 93 2E P5 +397  
 NM\$ +101  
 PTA +3.05SCC -0.6PL -1.2DPR  
 PTA +328M +30F +16P 50R  
 PTA\$ +101CY +.09 +.03 8/13  
 PTA% +.03  
 PTAT - .20T +.03 38R 8/13  
 PPA +2234M +127F +91P  
 CLASS ST9 SR8 BD9 DF7 RA5 RW9 LS6 FA7  
 FU7 UH8 UW8 UC6 UD5 TP6 TL5 LR5  
 GOLD % FAT % PRT  
 3-09 3 305 24070 4.4 1060 3.3 791  
 365 27480 4.4 1201 3.3 918

NOM ALL-AMERICAN SR 3-YEAR-OLD - 2009

### SHADY WALNUT CONN

10304939C  
 PTA +3.10SCC +0.3PL -1.3DPR  
 PTA +16M +29F +5P 97R  
 PTA% +.16 +.02  
 PTAT -.60T 95R 8/13  
 D/AV 19085M 4.0 762F 3.2 602P 8.2T

### MARLIE B B POLKIE-ET

10014952C  
 DHI % FAT % PRT  
 5-08 2 305 23042 3.9 891 3.4 780  
 6-10 2 305 24425 3.9 950 3.3 816  
 8-05 2 305 27244 4.8 1318 3.3 886  
 10-08 2 305 21129 4.4 924 3.4 728

NOM ALL-CANADIAN JR 3-YEAR-OLD - 2000  
 RES ALL-CANADIAN 4-YEAR-OLD - 2001  
 ALL-CANADIAN 5-YEAR-OLD - 2002  
 RES ALL-CANADIAN - 2006

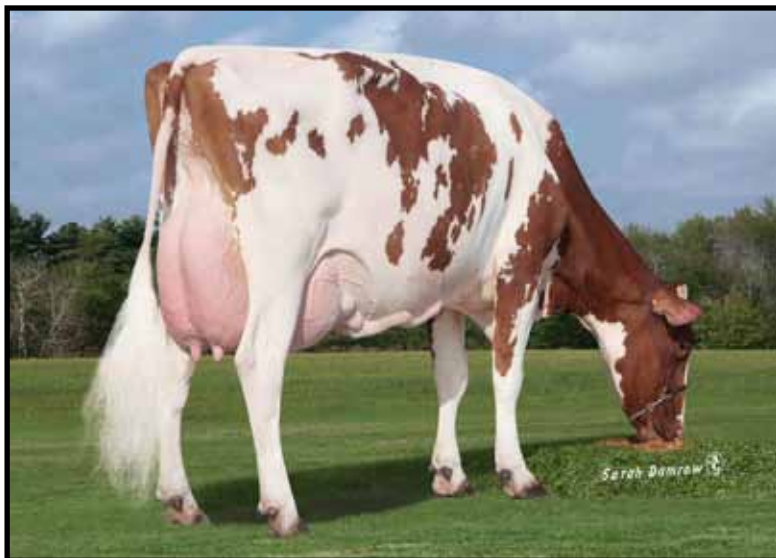
### GRANDDAM: ST OURS POLIE-ET

759422C VG-85 CAN  
 6-11 2 344 15113 4.4 668 3.6 551

*Edgebrook Farm*  
**MIKE & BRENDA DILLY**  
 1371 290th St., Montour, IA 50173  
 (641) 492-6111

# VAN-DE PHOENIX CORKY ARIZONA

## VERY GOOD-85



### VAN-DE PHOENIX CORKY ARIZONA

89.85% AYRSHIRE 04/16/10 FEMALE  
67341233 89.85%

3-01 85 ELITE P9 +535  
NM\$ +567  
PTA +2.86SCC +2.7PL +0.2DPR  
PTA +1562M +79F +58P 44R  
PTA\$ +567CY 8/13  
PTA% +.09 +.04  
PTAT +.20T 46R 8/13  
PPA +3525M +195F +126P

CLASS ST7 SR7 BD7 DF5 RA6 RW5 LS5 FA6  
FU7 UH7 UW8 UC7 UD8 TP5 TL6 LR8

DHI	%	FAT	%	PRT			
1-10	2	305	19430	4.6	889	3.4	669
3-01	2	PROJ	20185	4.1	836	3.4	678

RANKED #3 ON 8/13 HIGH CPI LIST

BURDETTE SON GOING TO TAURUS SERVICE

### VAN-DE PIUHA PHOENIX

100541300 84.71%

### VAN-DE ORKKO CAITLIN CORKY

100545377 4-05 90 ELITE  
DHI % FAT % PRT  
1-11 2 305 22970 3.9 903 3.2 729  
349 26100 3.9 1014 3.2 834  
3-01 2 305 25500 4.3 1097 3.4 859  
4-03 2 305 26990 3.9 1055 3.4 908

RANKED #7 ON 8/13 HIGH CPI LIST  
2ND JR 2-YEAR-OLD - 2010 INTERNATIONAL  
NOM ALL-AMERICAN JR 2-YEAR-OLD - 2010

### GRANDDAM:

### S&M-AYR TRIDENT CHERRY CAITLYN

100191064 4-00 90  
GOLD % FAT % PRT  
1-11 2 304 18830 3.8 707 2.9 541  
2-11 2 305 18860 3.6 684 2.9 555  
330 19630 3.6 716 3.0 583  
3-11 2 305 21600 4.0 857 3.0 645  
345 22290 4.0 889 3.0 669  
5-00 2 305 20330 4.0 806 2.9 587  
7-01 2 305 19560 3.8 734 2.8 540  
365 21160 3.7 792 2.8 592  
LIFE 2024 126490 3.8 4810 2.9 3649

*7 Oaks Dairy*

**MARGARET HAZELTINE**

2828 Kessler Road  
Janesville, WI 53548  
(608) 756-2913

**ROB & TIFFANY HAZELTINE**

3851 Braemore St.  
Janesville, WI 53548  
Cell (608) 295-3650 • tiffany22282@aol.com

# VAN-DE ORKKO CAITLIN CORKY

## EXCELLENT-90



### VAN-DE ORKKO CAITLIN CORKY

95% AYRSHIRE 04/21/08 FEMALE 95%  
 100545377  
 4-05 90 ELITE P9 +518  
 NM\$ +508  
 PTA +2.80SCC +2.8PFL +0.5DPR  
 PTA +1497M +60F +52P 58R  
 PTA\$ +508CY 8/13  
 PTA%  
 PTAT +.60T +.01 +.03  
 PPA +5113M +208F +172P 52R 8/13  
 CLASS ST8 SR8 BD9 DF8 RA5 RW5 LS5 FA5  
 F08 UH8 UW8 UC9 UD6 TP5 TL5 LR8  
 DHI % FAT % PRT  
 1-11 2 305 22970 3.9 903 3.2 729  
 349 26100 3.9 1014 3.2 834  
 3-01 2 305 25500 4.3 1097 3.4 859  
 4-03 2 305 26990 3.9 1055 3.4 908

RANKED #7 ON 8/13 HIGH CPI LIST  
 2ND JR 2-YEAR-OLD - 2010 INTERNATIONAL  
 NOM ALL-AMERICAN JR 2-YEAR-OLD - 2010

WE'RE BUILDING ON THIS COW FAMILY  
 WITH CORKY'S PROGENY:  
 VAN-DE PHOENIX CORKY ARIZONA  
 TWO BURDETTE DAUGHTERS  
 TWO REALITY DAUGHTERS  
 DUE TO KAMOURASKA VOLVO-ET

### PUROLAN ORKKO FI

41531C 90%  
 PTA +2.76SCC +5.0PL +2.2DPR  
 PTA +1061M +34F +52P 98R  
 PTA% -.04 +1.0  
 PTAT -.40T 85R 8/13  
 D/AV 22967M 3.8 883F 3.2 738P 8.3T

### S&M-AYR TRIDENT CHERRY CAITLYN

100191064 4-00 90  
 GOLD % FAT % PRT  
 1-11 2 304 18830 3.8 707 2.9 541  
 2-11 2 305 18860 3.6 684 2.9 555  
 330 19630 3.6 716 3.0 583  
 3-11 2 305 21600 4.0 857 3.0 645  
 345 22290 4.0 889 3.0 669  
 5-00 2 305 20330 4.0 806 2.9 587  
 350 21560 4.0 862 2.9 629  
 6-02 2 305 22480 3.7 824 2.7 617  
 307 22560 3.7 827 2.7 619  
 7-01 2 305 19560 3.8 734 2.8 540  
 365 21160 3.7 792 2.8 592  
 LIFE 2024 126490 3.8 4810 2.9 3649

### GRANDDAM: S&M-AYR BOYS CHERRY

100008685 4-03 89  
 GOLD % FAT % PRT  
 3-03 2 305 17140 4.2 712 3.2 549  
 312 17330 4.2 722 3.2 556

*7 Oaks Dairy*

MARGARET HAZELTINE  
 2828 Kessler Road  
 Janesville, WI 53548  
 (608) 756-2913

ROB & TIFFANY HAZELTINE  
 3851 Braemore St.  
 Janesville, WI 53548  
 Cell (608) 295-3650 • tiffany22282@aol.com

# VAN-DE CONN CRICKET FIREFLY

## EXCELLENT-91 2E



### VAN-DE CONN CRICKET FIREFLY

94.43% AYRSHIRE 06/13/06 FEMALE  
 100524635 94.43%  
 5-03 91 2E ELITE P5 +495

NM\$ +484  
 PTA +2.95SCC +3.1PL -0.4DPR  
 PTA +1383M +68F +46P 65R  
 PTA\$ +484CY 8/13  
 PTA% +.07 +.01  
 PTAT 34R 8/13  
 PPA +4444M +169F +137P

CLASS ST7 SR6 BD4 DF8 RA5 RW4 LS6 FA7  
 FU6 UH8 UW8 UC7 UD5 TP7 TL5 LR8

DHI % FAT % PRT  
 1-11 2 305 17150 4.0 685 3.1 535  
 325 18230 4.0 732 3.1 572  
 2-11 2 276 18040 4.2 765 3.3 593  
 3-10 2 305 28320 3.7 1041 3.2 910  
 5-01 2 305 27160 3.7 1006 3.2 870  
 6-06 2 PROJ 29702 4.0 1198 3.2 938  
 LIFE 1724 133620 3.9 5242 3.2 4321

RANKED #16 ON 8/13 HIGH CPI LIST

DUE MAY 2014 TO ROCKSTAR

### SHADY WALNUT CONN

10304939C  
 PTA +3.10SCC +0.3PL -1.3DPR  
 PTA +16M +29F +5P 97R  
 PTA% +.16 +.02  
 PTAT -.60T 95R 8/13  
 D/AV 19085M 4.0 762F 3.2 602P 8.2T

### VAN-DE JERRY K-T-DID CRICKET

100430983 88.87%  
 7-01 92 3E

DHI % FAT % PRT  
 1-09 2 305 19630 3.7 726 3.2 627  
 365 23330 3.8 881 3.2 755  
 3-02 2 305 21650 4.1 891 3.3 713  
 326 22710 4.2 943 3.3 753  
 4-02 2 305 22350 3.9 875 3.4 764  
 311 22660 3.9 889 3.4 775  
 5-02 2 341 28640 4.1 1176 3.4 984  
 6-03 2 305 24520 3.7 905 3.5 848  
 LIFE 1943 134520 4.0 5372 3.4 4582

### GRANDDAM: VAN-DE TBRUNO CANDIDA K-T-DID

100430956 77.75%  
 5-05 86

DHI % FAT % PRT  
 1-10 2 305 17400 4.1 708 3.3 568  
 321 18220 4.1 748 3.3 596  
 2-11 2 305 17870 4.3 765 3.4 599  
 310 18070 4.3 775 3.4 606  
 3-10 2 305 16790 4.1 691 3.4 568  
 365 18610 4.1 763 3.4 630  
 5-02 2 305 20270 4.3 875 3.4 692  
 319 20850 4.3 902 3.4 712  
 6-02 2 297 16580 4.0 655 3.4 557

*7 Oaks Dairy*

**MARGARET HAZELTINE**

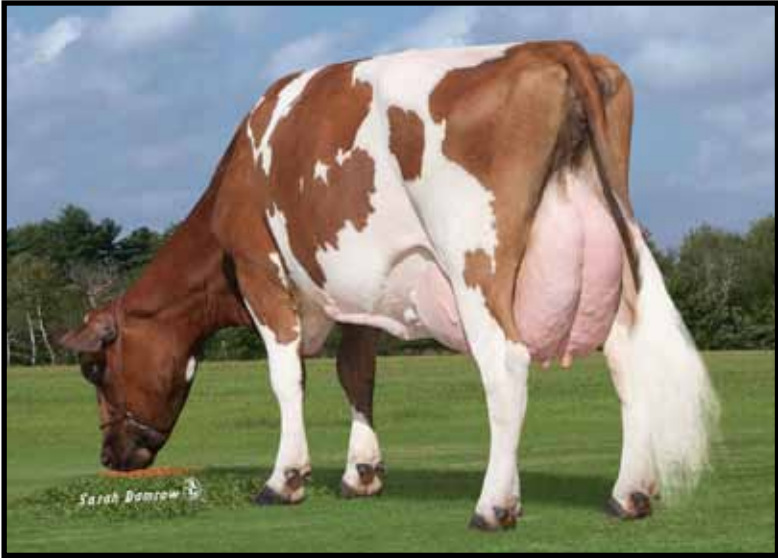
2828 Kessler Road  
 Janesville, WI 53548  
 (608) 756-2913

**ROB & TIFFANY HAZELTINE**

3851 Braemore St.  
 Janesville, WI 53548  
 Cell (608) 295-3650 • tiffany22282@aol.com

# VAN-DE CONSTANCE OLYMPIA

## VERY GOOD-86



### VAN-DE ORKKO CONSTANCE OLYMPIA

95% AYRSHIRE 12/20/08 FEMALE 95%  
 100558292 3-07 86 P9 +476

NM\$ +310  
 PTA +2.93SCC +0.8PL +0.9DPR  
 PTA +1083M +38F +44P 55R  
 PTA\$ +310CY 8/13  
 PTA%  
 PTAT -.02 +.05  
 PTAT +.40T 56R 8/13  
 PPA +2978M +111F +123P

CLASS ST9 SR7 BD8 DF8 RA7 RW7 LS9 FA6  
 FU4 UH7 UW8 UC5 UD4 TP8 TL6 LR8

DHI % FAT % PRT  
 2-02 2 305 20860 4.0 831 3.5 740  
 310 21240 4.0 849 3.6 758  
 3-02 2 305 25300 3.7 930 3.3 847  
 4-05 2 PROJ 20904 3.6 756 3.4 709

RANKED #42 ON 8/13 HIGH CPI LIST

WATCH FOR OLYMPIA'S KANSAS MATERNAL  
 SISTER!

### PUROLAN ORKKO FI

41531C 90%  
 PTA +2.76SCC +5.0PL +2.2DPR  
 PTA +1061M +34F +52P 98R  
 PTA% -.04 +.10  
 PTAT -.40T 85R 8/13  
 D/AV 22967M 3.8 883F 3.2 738P 8.3T

### VAN-DE T-STAR CONNIE CONSTANCE

100433847 5-10 90

DHI	%	FAT	%	PRT
2-01 2 305	14220	4.1	583	3.2 456
	306	14230	4.1	583 3.2 457
3-01 2 292	15830	4.1	642	3.4 540
5-01 2 305	32900	3.7	1215	3.1 1015

### GRANDDAM:

#### VAN-DE CORNELIUS MARY CONNIE

100169557 5-03 88

GOLD	%	FAT	%	PRT
1-09 2 305	16490	4.0	661	3.2 524
	312	16820	4.0	675 3.2 534
2-10 2 305	19100	4.2	796	3.0 576
	313	19270	4.2	805 3.0 583
3-09 2 305	19730	4.2	834	3.1 605
	365	22730	4.2	962 3.1 700
5-00 2 294	21090	4.1	870	2.9 619
8-00 2 215	13630	4.0	541	2.9 400
LIFE	2163	138590	4.1	5614 3.0 4188

*7 Oaks Dairy*

**MARGARET HAZELTINE**

2828 Kessler Road  
 Janesville, WI 53548  
 (608) 756-2913

**ROB & TIFFANY HAZELTINE**

3851 Braemore St.  
 Janesville, WI 53548  
 Cell (608) 295-3650 • tiffany22282@aol.com

# PALMYRA POKER GIGI-ET

## EXCELLENT-90



### PALMYRA POKER GIGI-ET

PUREBRED AYRSHIRE 12/29/07 FEMALE  
 65459562 4-07 90 P9 +465  
 NM\$ +290  
 PTA +2.83SCC +1.5PL -0.8DPR  
 PTA +1098M +35F +26P 58R  
 PTA\$ +290CY 8/13  
 PTA%  
 PTAT +1.40T -0.4 -0.4 60R 8/13  
 PPA +3235M +97F +81P  
 CLASS ST9 SR5 BD9 DF8 RA6 RW7 LS6 FA6  
 FU3 UH8 UW8 UC6 UD4 TP6 TL6 LR8  
 GOLD % FAT % PRT  
 2-03 2 305 19810 4.3 850 3.1 605  
 358 22110 4.3 951 3.1 682  
 3-05 2 300 20780 3.4 708 3.0 631  
 4-05 2 305 23690 3.6 857 3.1 737  
 337 24780 3.7 911 3.1 780

RANKED #66 ON 8/13 HIGH CPI LIST  
 2ND WINTER CALF - 2008 MID-ATLANTIC NATIONAL  
 1ST SR 2-YEAR-OLD - 2010 MID-ATLANTIC NAT'L  
 NOM ALL-AMERICAN SR 2-YEAR-OLD - 2010  
 3RD SR 3-YEAR-OLD - 2011 SOUTHERN NATIONAL

WE'RE BUILDING ON THIS COW FAMILY  
 WITH GIGI'S PROGENY:  
 FIVE BURDETTE DAUGHTERS  
 ONE BERKELY DAUGHTER  
 DUE TO KANSAS

HER DAUGHTER, PALMYRA-RAGIMORE-EV B  
 GIGI, WAS INTERMEDIATE & RES GRAND  
 CHAMPION AT THE 2013 MID-ATLANTIC  
 NAT'L

### DES CHAMOIS POKER-ET

8401621C  
 PTA +2.84SCC +1.6PL -0.7DPR  
 PTA +218M +20F +4P 97R  
 PTA% +.06 -.02  
 PTAT +.60T 96R 8/13  
 D/AV 19675M 3.9 774F 3.1 615P 8.4T

### PALMYRA RAVEN S. GINGER

100330199 6-03 89  
 GOLD % FAT % PRT  
 1-11 2 365 27710 3.0 841 3.0 842  
 3-04 2 334 23170 3.2 749 3.0 701  
 4-06 2 365 35760 4.5 1626 2.9 1052  
 5-11 2 365 22720 4.0 899 2.9 670  
 7-03 2 365 33482 4.5 1456 2.9 976  
 LIFE 2484 166323 3.8 6358 3.0 4994

ALL-AMERICAN FALL CALF - 2004  
 JR ALL-AMERICAN FALL CALF - 2004  
 RES INT CHAMPION - 2005 MID-ATLANTIC NAT'L  
 INT CHAMPION - 2005 MID-ATLANTIC NAT'L JR  
 GRAND CHAMPION - 2005 MID-ATLANTIC NAT'L JR  
 UNAN ALL-AMERICAN FALL YRLG IN MILK - 2005  
 UNAN JR ALL-AMERICAN FALL YRLG IN MILK - 2005

### GRANDDAM: PALMYRA SATELLITE L GINGER

100164712 4-10 86  
 GOLD % FAT % PRT  
 2-00 2 303 20350 3.8 771 3.1 636  
 2-11 2 303 15310 3.5 543 3.0 464  
 3-11 2 365 20860 3.9 804 3.1 648  
 5-01 2 299 23620 3.6 844 3.0 715  
 6-00 2 298 25100 3.1 789 2.9 731  
 LIFE 1569 105260 3.6 3752 3.0 3195

*7 Oaks Dairy*

**MARGARET HAZELTINE**  
 2828 Kessler Road  
 Janesville, WI 53548  
 (608) 756-2913

**ROB & TIFFANY HAZELTINE**  
 3851 Braemore St.  
 Janesville, WI 53548  
 Cell (608) 295-3650 • tiffany22282@aol.com



# SUNNY-ACRES TSB SILK

## EXCELLENT-92



### SUNNY-ACRES TSB SILK

PUREBRED AYRSHIRE 08/20/09 FEMALE  
 100579596 3-11 92 P9 +417  
 NM\$ +164  
 PTA +2.92SCC +0.8PFL +0.2DPR  
 PTA +76M +9F +9P 53R  
 PTA\$ +164CY 8/13  
 PTA% +.03 +.04  
 PTAT +1.40T 57R 8/13  
 PPA +488M +61F +31P  
 CLASS ST6 SR4 BD7 DF8 RA4 RW7 LS5 FA4  
 FU7 UH8 UW7 UC6 UD5 TP4 TL3 LR8  
 GOLD % FAT % PRT  
 2-03 2 305 21390 4.6 988 3.3 708  
 308 21630 4.6 1002 3.3 716

-----  
 2ND 4-YEAR-OLD - 2013 MID-ATLANTIC NATIONAL

### PALMYRA TRI-STAR BURDETTE-ET

100419568  
 PTA +2.78SCC +2.0PFL +0.9DPR  
 PTA +728M +25F +28P 96R  
 PTA% -.01 +.02  
 PTAT +1.80T 92R 8/13  
 D/AV 19241M 3.9 742F 3.2 608P 8.5T

### SUNNY-ACRES WILTON'S SATIRE

100470020 2-04 82  
 DHI % FAT % PRT  
 2-02 2 300 13880 3.9 547 3.4 465

### GRANDDAM: SUNNY-ACRES NOLAN'S SATIN

100390623 5-00 90  
 GOLD % FAT % PRT  
 1-11 2 305 18480 4.0 741 3.5 644  
 348 20640 4.1 848 3.5 728  
 3-00 2 272 15000 3.9 583 3.7 556  
 4-05 2 336 23390 4.2 980 3.3 779  
 5-06 2 305 30020 4.5 1348 3.3 989  
 365 32790 4.5 1491 3.4 1102  
 7-03 2 305 26180 3.6 936 3.3 872  
 349 28970 3.6 1045 3.4 974  
 LIFE 1683 121110 4.1 4958 3.4 4152

*Sunny Acres*

DOUG & KATHE EVANS & FAMILY

4106 Davenport Rd., Georgetown, NY 13072

315.837.4777 • Andrew Cell 315.750.0719 • Gregory Cell 315.456.8283

sunnyacresayrshires@gmail.com

# SUNNY-ACRES RATTLER'S KACIE

## EXCELLENT-94



### SUNNY-ACRES RATTLER'S KACIE

PUREBRED AYRSHIRE 06/07/08 FEMALE  
100536371 4-02 94 P8 +397

NM\$ +86  
PTA +2.97SCC +0.4PFL +0.7DPR  
PTA -320M +18F -6P 55R  
PTA\$ +86CY 8/13  
PTA%  
PTAT +1.30T 59R 8/13  
PPA -385M +31F -23P

CLASS	ST9	SR7	BD8	DF9	RA6	RW8	LS6	FA7
	FU8	UH8	UW8	UC6	UD5	TP7	TL3	LR8
GOLD			%	FAT	%	PRT		
1-11	2	305	17680	3.8	674	3.1	546	
		321	18420	3.9	710	3.1	570	
3-00	2	294	19720	3.9	774	3.0	590	
3-11	2	305	25810	4.1	1069	3.0	776	
		349	27770	4.2	1168	3.0	846	

-----  
1ST SUMMER YRLG - 2009 MID-ATLANTIC NATIONAL  
JUNIOR CHAMPION - 2009 MID-ATLANTIC NATIONAL  
1ST SUMMER YEARLING - 2009 INTERNATIONAL  
UNAN ALL-AMERICAN SUMMER YEARLING - 2009  
1ST JR 2-YEAR-OLD - 2010 MID-ATLANTIC NAT'L  
1ST JR 2-YEAR-OLD - 2010 INTERNATIONAL  
UNAN ALL-AMERICAN JR 2-YEAR-OLD - 2010  
1ST JR 3-YEAR-OLD - 2011 MID-ATLANTIC NAT'L  
INT CHAMP - 2011 MID-ATLANTIC NATIONAL  
1ST JR 3-YEAR-OLD - 2011 INTERNATIONAL  
UNAN ALL-AMERICAN JR 3-YEAR-OLD - 2011  
1ST 4-YEAR-OLD - 2012 MID-ATLANTIC NATIONAL  
SENIOR CHAMPION - 2012 MID-ATLANTIC NATIONAL  
GRAND CHAMPION - 2012 MID-ATLANTIC NATIONAL  
2ND 4-YEAR-OLD - 2012 INTERNATIONAL  
RES ALL-AMERICAN 4-YEAR-OLD - 2012

### COVEY-P&A CONN RATTLER-ET

100463370  
PTA +3.04SCC +2.1PL  
PTA -562M +53F -4P 88R  
PTA% +.42 +.08  
PTAT +.10T 69R 8/13  
D/AV 20661M 4.4 900F 3.2 666P 8.4T

### STILLMORE BBBK KLASSY

100326965 5-10 94 2E

GOLD			%	FAT	%	PRT
2-10	2	293	17250	4.1	707	3.6 629
3-09	2	280	18470	4.0	733	3.5 647
4-09	2	315	19530	3.9	767	3.3 649
5-09	2	310	21430	4.1	870	3.3 712
6-09	2	365	28550	3.8	1078	3.5 1001
LIFE	1751	113860	3.9	4482	3.5	3944

-----  
RES ALL-AMERICAN FALL CALF - 2004  
RES ALL-AMERICAN FALL YEARLING - 2005  
HM ALL-AMERICAN SR 2-YEAR-OLD - 2006  
RES INT CHAMP - 2007 MID-ATLANTIC NATIONAL  
RES INT CHAMPION - 2007 CENTRAL NATIONAL  
RES INT CHAMPION - 2007 SOUTHERN NATIONAL  
RES ALL-AMERICAN SR 3-YEAR-OLD - 2007  
NOM ALL-AMERICAN 5-YEAR-OLD - 2009  
SENIOR CHAMPION - 2010 MID-ATLANTIC NATIONAL  
GRAND CHAMPION - 2010 MID-ATLANTIC NATIONAL  
RES ALL-AMERICAN AGED COW - 2010

### GRANDDAM: STILLMORE SAVAGE KITTEN

100118980

DHIR			%	FAT	%	PRT
4-00	2	355	18160	4.0	732	3.5 629
5-01	2	348	18730	3.5	656	3.2 607
6-03	2	333	33958	4.4	1511	3.1 1049

-----  
NOM ALL-AMERICAN FALL HEIFER CALF - 2000

*Sunny Acres*

DOUG & KATHE EVANS & FAMILY

4106 Davenport Rd., Georgetown, NY 13072

315.837.4777 • Andrew Cell 315.750.0719 • Gregory Cell 315.456.8283

sunnyacresayrshires@gmail.com

# SUNNY-ACRES HARMONY'S KENNEDY

## EXCELLENT-94 2E



### SUNNY-ACRES HARMONY'S KENNEDY

PUREBRED AYRSHIRE 03/29/07 FEMALE  
 100492594 5-04 94 2E P- +363  
 NM\$ +104  
 PTA +2.84SCC +2.4PL +1.8DPR  
 PTA -353M -16F -12P 60R  
 PTA\$ +104CY 8/13  
 PTA%  
 PTAT +1.20T -01 -01  
 PPA +251M +11F 60R 8/13  
 CLASS ST8 SR7 BD7 DF8 RA5 RW8 LS6 FA7  
 FU9 UH8 UW9 UC8 UD6 TP8 TL2 LR8  
 GOLD % FAT % PRT  
 2-03 2 294 17920 3.6 654 3.0 539  
 3-02 2 287 17400 3.8 668 3.3 582  
 4-02 2 305 24110 3.9 934 3.3 790  
 309 24250 3.9 941 3.3 796  
 5-02 2 305 26490 3.7 983 2.9 780  
 315 26980 3.7 1003 3.0 798

HM JR ALL-AMERICAN SPRING CALF - 2007  
 NOM ALL-AMERICAN SPRING YEARLING - 2008  
 UNAN JR ALL-AMERICAN SPRING YEARLING - 2008  
 INT CHAMP - 2009 MID-ATLANTIC NATIONAL JR  
 RES INT CHAMP - 2009 MID-ATLANTIC NATIONAL  
 UNAN ALL-AMERICAN JR 2-YEAR-OLD - 2009  
 UNAN JR ALL-AMERICAN JR 2-YEAR-OLD - 2009  
 RES INT CHAMP - 2010 MID-ATLANTIC NATIONAL  
 RES ALL-AMERICAN JR 3-YEAR-OLD - 2010  
 SENIOR CHAMPION - 2011 MID-ATLANTIC NATIONAL  
 GRAND CHAMPION - 2011 MID-ATLANTIC NATIONAL  
 HM ALL-AMERICAN 4-YEAR-OLD - 2011  
 RES SR CHAMPION - 2012 MID-ATLANTIC NATIONAL  
 RES GRAND CHAMPION - 2012 MID-ATLANTIC NAT'L  
 TOTAL PERF WINNER - 2012 MID-ATLANTIC NAT'L  
 NOM ALL-AMERICAN 5-YEAR-OLD - 2012  
 RES SR CHAMP - 2013 MID-ATLANTIC NATIONAL

### KELLCREST HARMONY-ET

10029042C  
 PTA +2.77SCC +1.8PL +2.0DPR  
 PTA -980M -32F -32P 96R  
 PTA% +.04  
 PTAT +.60T 88R 8/13  
 D/AV 17289M 3.9 668F 3.1 541P 8.4T

### SUNNY-ACRES BRENDAN'S KINETA

100283769 4-11 85  
 GOLD % FAT % PRT  
 2-02 2 305 19310 3.5 674 3.0 571  
 365 22380 3.5 773 3.0 668  
 3-08 2 305 23240 3.6 846 3.3 767  
 334 24180 3.7 893 3.3 808  
 4-09 2 296 19360 3.0 573 3.3 641  
 5-08 2 209 14770 3.6 535 3.2 471

### GRANDDAM: SUNNY-ACRES JJ KINETA 2-ET

100057700 6-05 91  
 GOLD % FAT % PRT  
 2-00 2 279 14910 4.1 615 3.1 465  
 2-11 2 305 20640 4.5 933 3.4 695  
 308 20770 4.5 939 3.4 701  
 3-10 2 305 21440 3.8 819 3.2 678  
 365 24390 4.0 986 3.3 793  
 5-09 2 305 23790 3.7 878 3.1 741  
 313 24220 3.7 895 3.1 756  
 6-10 2 305 18380 3.7 687 3.3 600  
 314 18510 3.7 693 3.3 606  
 7-10 2 239 12570 3.9 487 3.1 392  
 LIFE 1888 117640 4.0 4758 3.2 3801

2ND JR 2-YEAR-OLD - 2000 EASTERN NATIONAL  
 2ND JR 2-YEAR-OLD - 2000 EASTERN NATIONAL JR

*Sunny-Acres*

DOUG & KATHE EVANS & FAMILY

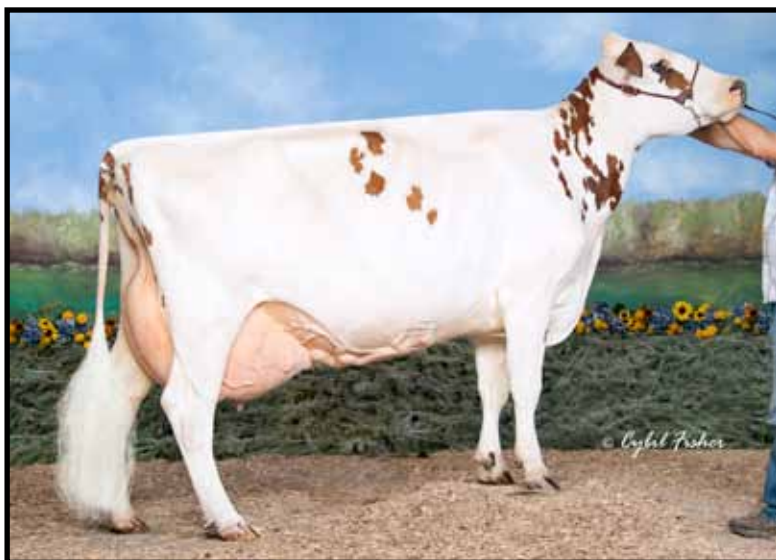
4106 Davenport Rd., Georgetown, NY 13072

315.837.4777 • Andrew Cell 315.750.0719 • Gregory Cell 315.456.8283

sunnyacresayrshires@gmail.com

# SUNNY-ACRES JP GWYNETH

## EXCELLENT-94



### SUNNY-ACRES JP GWYNETH

PUREBRED AYRSHIRE 08/11/05 FEMALE  
100414714 7-00 94 P6 +328

NM\$ +10  
PTA +3.04SCC +2.0PL -0.5DPR  
PTA -60M -2F -18P 59R  
PTA\$ +10CY 8/13  
PTA% -.09  
PTAT +.80T 56R 8/13  
PPA -1162M -32F -71P

CLASS	ST8	SR8	BD9	DF9	RA6	RW7	LS6	FA7
	FU8	UH7	UW8	UC8	UD4	TP8	TL3	LR8
GOLD				%	FAT	%	PRT	
2-05	3	305	19340	3.8	744	2.8	551	
		365	22720	3.9	888	2.9	669	
4-01	2	305	23930	4.1	993	2.9	695	
		365	27350	4.1	1120	3.0	808	
5-07	2	305	20790	3.9	815	2.8	582	
		365	23770	3.9	926	2.9	681	
6-10	2	292	19530	4.1	809	2.8	547	
LIFE	1587	102110	4.0	4118	2.9	3010		

2ND AGED COW - 2011 MID-ATLANTIC NATIONAL  
1ST AGED COW - 2012 MID-ATLANTIC NATIONAL  
NOM ALL-AMERICAN AGED COW - 2012  
1ST 100,000 LB COW - 2013 MID-ATLANTIC NAT'L

### SUNNY-ACRES JURISPRUDENCE

100283741  
PTA +2.85SCC +3.8PL -0.8DPR  
PTA +325M +14F -1P 88R  
PTA% +.01 -.06  
PTAT +.80T 85R 8/13  
D/AV 18073M 3.9 702F 3.1 555P 8.4T

### SUNNY-ACRES PROLY GLENDA

CLASS	ST8	SR8	BD9	DF9	RA6	RW7	LS6	FA7
	FU8	UH7	UW8	UC8	UD4	TP8	TL3	LR8
GOLD				%	FAT	%	PRT	
5-00	2	219	8890	3.9	347	3.2	284	
5-11	2	305	27140	3.6	970	2.9	779	
		365	29360	3.6	1052	2.9	857	
7-05	2	305	24740	3.1	775	3.0	735	

### GRANDDAM: SUNNY-ACRES GLENDA KIN

CLASS	ST8	SR8	BD9	DF9	RA6	RW7	LS6	FA7
	FU8	UH7	UW8	UC8	UD4	TP8	TL3	LR8
GOLD				%	FAT	%	PRT	
2-02	2	305	12010	3.7	446	3.3	391	
3-02	2	291	14170	3.8	537	3.5	493	
4-01	2	289	18100	4.1	734	3.4	613	
5-01	2	305	21190	3.8	808	3.5	744	
		306	21230	3.8	810	3.5	746	
6-01	2	305	25390	3.5	887	3.4	851	
LIFE	1722	104340	3.8	3932	3.4	3575		

*Sunny Acres*

**DOUG & KATHE EVANS & FAMILY**

4106 Davenport Rd., Georgetown, NY 13072

315.837.4777 • Andrew Cell 315.750.0719 • Gregory Cell 315.456.8283

sunnyacresayrshires@gmail.com

# PALMYRA-SA BENDIG BROOKLYN-ET

## VERY GOOD-87



### PALMYRA-SA BENDIG BROOKLYN-ET

PUREBRED AYRSHIRE 12/23/10 FEMALE  
 69261861 2-07 87 P9 +508  
 NM\$ +293  
 PTA +2.96SCC +0.8PFL -1.2DPR  
 PTA +1161M +54F +31P 47R  
 PTA\$ +293CY 8/13  
 PTA%  
 PEA +1271M +.05 -.03  
 PEA +54F +22P  
 CLASS ST6 SR5 BD7 DF7 RA3 RW7 LS5 FA4  
 FU7 UH8 UW8 UC7 UD6 TP5 TL3 LR6  
 2-03 2 PROJ 25350 4.1 1037 2.9 730

BROOKLYN IS BEING FLUSHED TO DREAMER

### PALMYRA JERRY BENDIG-ET

100323168  
 PTA +2.80SCC +1.4PFL -1.4DPR  
 PTA +1258M +56F +38P 90R  
 PTA% +.03 -.01  
 PTAT +.90T 78R 8/13  
 D/AV 20772M 3.9 818F 3.1 652P 8.3T

### PALMYRA REALITY BONNIE-ET

65003767 4-05 88  
 GOLD % FAT % PRT  
 2-03 2 305 21020 4.7 987 3.2 679  
 365 24807 4.7 1166 3.3 818  
 3-08 2 305 24440 5.0 1230 3.3 815  
 311 24850 5.0 1250 3.3 829  
 4-08 2 305 21470 4.3 928 3.5 753

NOM ALL-AMERICAN SR 2-YEAR-OLD - 2009  
 3RD SR 3-YEAR-OLD - 2010 INTERNATIONAL  
 HM ALL-AMERICAN SR 3-YEAR-OLD - 2010

### GRANDDAM: PALMYRA RIPKEN J. BONNIE

100045224 6-07 93 2E  
 GOLD % FAT % PRT  
 2-03 2 354 21190 4.4 942 3.2 675  
 3-05 2 305 23460 4.2 992 3.3 767  
 365 27370 4.1 1130 3.3 892  
 5-03 2 305 26510 3.7 993 3.1 826  
 317 27120 3.7 1013 3.1 846  
 6-03 2 305 27090 3.6 978 3.2 875  
 344 28470 3.6 1034 3.2 920  
 7-04 2 305 23820 3.0 726 3.1 733  
 365 27270 3.1 853 3.1 835  
 LIFE 2313 159830 3.8 6113 3.2 5120

HM ALL-AMERICAN JR 3-YEAR-OLD - 2001  
 JR ALL-AMERICAN JR 3-YEAR-OLD - 2001

*Sunny-Acres*

**DOUG & KATHE EVANS & FAMILY**

4106 Davenport Rd., Georgetown, NY 13072

315.837.4777 • Andrew Cell 315.750.0719 • Gregory Cell 315.456.8283

sunnyacresayrshires@gmail.com

# DON HAVEN BBBK TIPSY VERY GOOD-88



### DON HAVEN BBBK TIPSY

100590612	2-06 88			P6	+383
NM\$	-24				
PTA	+3.13SCC	-0.9PL	-0.5DPR		
PTA	+122M	-3F	+6P	37R	
PTA\$	-24CY			8/13	
PTA%		-0.04	+0.01		
PTAT	+1.00T		38R	8/13	
PEA	+601M	-5F	+20P		
CLASS	ST6 SR5 BD6 DF8 RA5 RW6 LS6 FA6				
	FU9 UH8 UW7 UC8 UD8 TP7 TL5 LR9				
GOLD		%	FAT	%	PRT
2-03	3 305	24400	3.6	876	2.9 696
	317	25360	3.6	919	2.9 726

-----  
 1ST SPRING CALF - 2010 SOUTHERN NATIONAL  
 NOM ALL-AMERICAN SPRING CALF - 2010  
 1ST JR 2-YEAR-OLD - 2012 INTERNATIONAL  
 RES INT CHAMPION - 2012 INTERNATIONAL  
 UNAN ALL-AMERICAN JR 2-YEAR-OLD - 2012

FRESH 6/14/13  
 120 LBS ON SEPT TEST

AGGRESSIVELY FLUSHING.  
 INQUIRIES WELCOME.

### BLACKADDAR B B KELLOGG

777850C					
PTA	+3.15SCC	+1.1PL	+0.1DPR		
PTA	-723M	-35F	-16P	98R	
PTA%		-0.04	+0.04		
PTAT	+1.40T		97R	8/13	
D/AV	17972M	3.8	689F	3.2	574P

### DON HAVEN REALITY TOPSY

7776259C	VG-85	CAN			
4-03	2 305	19013	4.6	869	3.4 655
5-04	2 365	26292	4.4	1153	3.4 880

-----

### GRANDDAM: DON HAVEN HAPPINESS TAFFY

7545453C	VG-88	CAN			
7-00	2 305	19487	4.4	855	3.3 635
8-00	PROJ	20479	4.5	928	3.4 699

---

*Ullmstar Dairy*  
**DAMIAN & KILEY ULLMER**  
 N9268 State Hwy 55, Seymour, WI 54165  
 (920) 833-2995 • cell (920) 639-2375

# MILLER'S BURT BRAN MUFFIN

## EXCELLENT-93 2E



### MILLER'S BURT BRAN MUFFIN

PUREBRED AYRSHIRE 03/31/08 FEMALE  
 63970258 5-02 93 2E P9 +473  
 NM\$ +373  
 PTA +2.85SCC +2.5PL +0.2DPR  
 PTA +737M +45F +25P 46R  
 PTA\$ +373CY 8/13  
 PTA%  
 PTAT +1.20T 49R 8/13  
 PPA +2977M +179F +95P  
 CLASS ST8 SR8 BD8 DF7 RA5 RW8 LS5 FA7  
 FU7 UH8 UW9 UC7 UD5 TP7 TL6 LR8  
 GOLD % FAT % PRT  
 2-02 2 305 18690 3.7 700 3.2 592  
 365 21880 3.8 821 3.2 704  
 3-09 2 305 25300 7.0 1769 3.4 853  
 365 27890 6.8 1903 3.4 952

-----  
 FUTURITY WINNER - 2010 OH STATE FAIR  
 1ST JR 2-YEAR-OLD - 2010 SOUTHERN NATIONAL  
 INTERMEDIATE CHAMP - 2010 SOUTHERN NATIONAL  
 RES ALL-AMERICAN JR 2-YEAR-OLD - 2010  
 GRAND CHAMPION - 2012 OH SPRING NAT'L SHOW  
 1ST 4-YEAR-OLD & HM GRAND CHAMPION - 2012 OH  
 STATE FAIR  
 1ST 5-YEAR-OLD & GRAND CHAMPION - 2013 OH  
 STATE FAIR  
 TYPE & PRODUCTION WINNER - 2013 OH STATE  
 FAIR

### MILLER'S TRI-STAR BURT

63970243

### MILLER'S DREAM BUFF

100440953 6-04 91 2E  
 GOLD % FAT % PRT  
 2-04 2 305 18980 4.5 854 3.2 606  
 3-07 2 304 22690 4.1 925 3.4 766  
 4-06 2 305 22900 4.0 914 3.3 748  
 365 25950 4.1 1057 3.3 863  
 5-09 2 305 20090 4.0 808 3.5 704  
 317 20640 4.0 831 3.5 727  
 6-09 2 305

### GRANDDAM: MILLER'S JAMES BUFFY

100059029 7-07 88  
 GOLD % FAT % PRT  
 2-00 2 286 14840 3.8 568 3.3 487  
 3-00 2 305 17050 4.2 723 3.5 589  
 331 17640 4.2 742 3.5 611  
 4-01 2 281 17320 3.9 682 3.2 555  
 5-00 2 293 20560 4.2 856 3.3 683  
 6-00 2 305 20950 3.6 746 3.1 658  
 365 22830 3.5 807 3.1 719  
 7-05 2 305 21910 3.7 816 3.2 704  
 365 24350 3.7 904 3.3 800  
 9-02 2 305 21330 3.6 772 3.2 692  
 LIFE 2742 168240 3.8 6456 3.3 5510

*Miller Family*  
**JACK & MICK MILLER**  
 12261 Pemberville Rd., Bradner, OH 43406  
 Jack (419) 288-2834 • Mick (419) 288-2210

# PLUM-BOTTOM LENNON RHODIE

## VERY GOOD-85



### PLUM-BOTTOM LENNON RHODIE, **POLLED**

PUREBRED AYRSHIRE 07/13/09 FEMALE  
 100582064 3-10 85 P6 +376

NM\$	+36				
PTA	+2.95SCC	-1.4PL	-0.3DPR		
PTA	+380M	+5F	+18P	41R	
PTA\$	+36CY				8/13
PTA%			+0.03		
PTAT	-.20T		.39R		8/13
PPA	+1622M	+32F	+66P		
CLASS	ST5 SR6 BD5 DF5 RA5 RW6 LS5 FA5				
	FU6 UH5 UW5 UC6 UD7 TP5 TL7 LR7				
DHI		%	FAT %	PRT	
2-06	2 305	11890	3.7	442 3.3	398
	333	12730	3.8	479 3.4	430
3-07	PROJ	15275			

RECORDS PRODUCED ON ROTATIONAL GRAZING

### SON:

**PLUM-BOTTOM BURDETTE RYDER, **POLLED****  
 BEING GENOMICALLY TESTED FOR TAURUS

### DAUGHTER: PLUM-BOTTOM TAURUS PETEY RUE

BRED HEIFER CARRYING EMBRYO FROM  
 PLUM-BOTTOM TRIDENT PARIS, EX-95 4E  
 DUE MARCH 7, 2014

### PLUM-BOTTOM REWARD LENNON, **POLLED**

100065385  
 PTA +3.13SCC -5.7PL -0.4DPR  
 PTA -111M +1F +12P 84R  
 PTA% +.02 +.08  
 PTAT -.30T 70R 8/13  
 D/AV 17480M 3.8 667F 3.3 570P 8.1T

### MAULFAIR ACRES LAWYER REPUNZEL

100325384 8-06 86  
 9-01 2 305 15866 3.8 603 3.1 492  
 365 17483 3.8 664 3.1 542

RECORDS PRODUCED ON ROTATIONAL GRAZING

### GRANDDAM:

### MAULFAIR ACRES RECRUIT RHONDA

100199745  
 SOLD AS FRESH HEIFER, NO RECORDS

### THIRD DAM: MAULFAIR ACRES HELIGO ROSENE

### FOURTH DAM: MASONIC HOMES WELCOME REBECCA

3-03 87  
 6-01 2 305 22305 3.6 803 3.0 669

*Plum Bottom Ayrshires*

AUDREY GAY RODGERS

6364 SR 655, Belleville, PA 17004

(717) 677-3731 • www.hameaufarm.com

hameau@embarqmail.com



# CREEK-VIEW SHIPLEY PRIZE EXCELLENT-90



### CREEK-VIEW SHIPLEY PRIZE

PUREBRED AYRSHIRE      03/02/07 FEMALE  
 100479654 5-07 90      P- +408  
 NM\$      +109  
 PTA      +2.97SCC    -0.2PFL    -0.7DPR  
 PTA      +514M      +19F      +17P      45R  
 PTA\$      +109CY                8/13  
 PTA%  
 PTAT      +.60T           40R      8/13  
 PPA      +1931M      +53F      +68P  
 CLASS ST8 SR7 BD8 DF8 RA5 RW8 LS6 FA6  
           FU6 UH6 UW6 UC6 UD5 TP5 TL8 LR5  
 5-04 2 305 18566 3.5 656 3.3 619  
           365 22130 3.6 796 3.3 730

RECORDS PRODUCED ON ROTATIONAL GRAZING

### PICTURED WITH DAUGHTER:

PLUM-BOTTOM SOLDIER PIPPA  
 BRED HEIFER DUE 4/16/14

### MAPLE-DELL SHIPLEY-ET

100378168  
 PTA      +2.84SCC    +1.3PL    +0.2DPR  
 PTA      +275M      +18F      +10P      88R  
 PTA%           +.04      +.01  
 PTAT      +.60T           84R      8/13  
 D/AV 18617M 3.8 716F 3.1 581P 8.4T

### PLUM-BOTTOM RECRUITER PRAGUE

100206092 6-00 87  
 DHI      %      FAT %      PRT  
 3-06 2 300 19390 4.0 776 3.2 625  
 4-06 2 305 22060 3.9 858 2.9 643  
 5-11 2 305 23210 3.7 857 2.9 683

### GRANDDAM: PLUM-BOTTOM TRIDENT'S PARIS

1016062 12-04 95 4E  
 GOLD      %      FAT %      PRT  
 2-04 2 365 14540 4.1 594 3.2 468  
 3-09 2 365 16500 4.1 684 3.2 534  
 8-09 2 305 21970 3.9 862 2.9 644  
 10-03 2 365 23750 3.8 905 3.1 742  
 11-11 2 365 24780 4.1 1015 2.9 710  
 LIFE 3059 156660 4.0 6245 3.1 4871

RES ALL-AMERICAN AGED COW 2003  
 RES GRAND CHAMPION - 2005 MID-ATLANTIC NAT'L  
 UNAN ALL-AMERICAN AGED COW - 2005  
 HM ALL-AMERICAN AGED COW - 2006  
 RES SR CHAMPION - 2008 MID-ATLANTIC NATIONAL  
 RES GRAND CHAMPION - 2008 MID-ATLANTIC NAT'L  
 NOM ALL-AMERICAN AGED COW - 2008

*Plum Bottom Ayrshires*

**AUDREY GAY RODGERS**

6364 SR 655, Belleville, PA 17004

(717) 677-3731 • www.hameaufarm.com

hameau@embarqmail.com

YOUR SOURCE FOR PROFITABLE

# Ayrshire

GENETICS

The great Ayrshire breed, founded in Scotland and developed there because of the cow being hardy and thrifty with the ability to produce excellent quality and quantity of milk on a scant ration, has always interested me. Ayrshire genetics, if used in a mindful way, can add profitability to the pure breed, plus provide many opportunities for cross-breeding and incorporation into other breeds, including red, around the world.

Taurus is a Pearl contributor to the U.S. Ayrshire Breeders Foundation because I believe, with a treasury of endowment money, some very worthwhile projects and opportunities for youth can be developed in the quest for the Ayrshire Breed. The Foundation will contribute to the future success of Ayrshire breeders and dairymen around the world. The possibility of breed-specific scientific projects that the Foundation can support and enhance will be very positive for the future of animal and mankind.

Many great Ayrshire animals, both past and more recent, have had major influences in breeding a more profitable cow. Taurus Service was privileged to have developed one of the best sires of recent time, 76AY0710 Adrossan E.V. Kates Trident, EX-95. His influence of the past, and as it continues to this day, makes me proud; and I therefore have a soft spot in my heart for the Ayrshire Breed and the purposes of the Foundation.

I encourage individuals who may share similar feelings in their hearts to make a contribution to the Foundation. Last year Taurus Service committed to donate "royalty income" on U.S. Ayrshire semen sales and has agreed to do so again for our new Fiscal Year. I encourage breeders to purchase code 76 Taurus semen to help benefit the Foundation and to also make an individual donation.

-- Dick Witter, President, Taurus Service Inc.

PROFITABLE GENETICS



SINCE 1971 Ph: 570-833-5123 | Toll Free: 800-836-5123 | [www.taurus-service.com](http://www.taurus-service.com)

*In Canada, semen is available from Foundation Genetics 519-291-9916.*





*A member of the U.S. Livestock Genetics Export*

1224 Alton Darby Creek Road, Suite B

Columbus, Ohio 43228

(614) 335-0020 | (614) 335-0023 Fax | [info@usayrshire.com](mailto:info@usayrshire.com)

**[www.USAYrshire.com](http://www.USAYrshire.com)**